

Identifying images on moving objects to enhance the recognition

C. Raghavendra¹, A. Kumaravel², S. Sivasubramanian³

¹ Scholar, CSE Department, Bharath University, Chennai.

² Dean, IT Department, Bharath University, Chennai.

³ Professor, CSE Department, Mohamed Sathak Engineering College, Chennai.

Abstract

To explore another group of algorithms that break down time-changing scenes, perceiving and following educated questions after some time. The new procedures are wanted to address key request of moving pictures, including capricious moment to-minute changes in region, gauge, presentation, lighting, and obstacle. We exhibit a novel endeavour in which objects turn and divert while suspended from a flexible's arms; the identification and following calculation joins attributes of various earlier distributed strategies, consolidating them in a novel mould to empower this recently presented assignment. Different strategies have discovered that enhancing recognition will enhance following; we demonstrate that enhanced following enhances object recognition.

1. Introduction

Most work on visual recognition has concentrated on static pictures, and regular investigations of moving picture recognition as a rule rely upon the presence of broadened datasets of complex motion picture scenes containing marked distinguished questions in the edges of the scene, requiring broad (and costly) human naming.

There are no settled after building determinations of the errand of perceiving and following moving items in scenes; the undertaking is characterized by correlation with human capacities, and the confidence in its calculability emerges exclusively from the way that people (and different creatures) promptly perform it. Be that as it may, the instruments by which these capacities emerge in natural frameworks are obscure. Our work has been established on deciding a movement of perceptual and subjective estimations from cerebrum circuit operation [20]. Here we depict an as of late gathered strategy for seeing and following things in time-contrasting scenes.

We present another dataset in which objects are suspended from a spinning versatile and saw from a settled camera. The articles are liable to insurgency of the portable, change in clear area and size because of versatile upheaval, turn set up and oscillatory wobble, and time-shifting impediment because of going behind different items amid versatile unrest.

Getting ready in this errand is performed just on a course of action of static photos of the things, outside the convenient condition. Testing involves seeing and following each of four things suspended from the moving adaptable.

In spite of the fact that progressions to estimate, area, revolution, lighting and impediment exhibit challenges past those of static pictures, they likewise present data about progressive incremental question changes, along these lines giving important limitations after some time about the items and their different stances and turns.

2. Methodology description

For a dataset of items, starting preparing is performed on a restricted settled arrangement of static pictures of each question (four pictures for every protest in the analyses detailed here). The framework is then presented to recordings of the items suspended from the arms of a versatile, and accordingly spinning with the portable and in addition unreservedly pivoting set up.

Video handling is portrayed here in three phases: singular edges, outline groupings, and last question identification.

Stage 1: Individual casings. Contribution to the calculation are ongoing groupings of video outlines; at present 10 outlines/sec are utilized for recordings of 30-60 sec term. An edge location calculation is kept running on an underlying casing of the video. Jumping boxes are built around the edges of distinguished blobs in the edge. The means in the edge identification calculation are as per the following:

- i. Contrast inclinations are figured by means of Sobel channel to make a double veil containing the divided protest.
- ii. Gaps in lines encompassing the Sobel picture are enlarged utilizing straight organizing components in vertical and even bearings.
- iii. Vacant zones in picture's inside are filled.
- iv. The coming to fruition blob is smoothed two times through breaking down with a gem sorting out part. The ensuing blob has predictable cut off points.
- v. We perceive each such blob in the photo by intersection related concentrates on its cutoff.

By perceiving the breaking point of each blob, we can enlist skipping boxes around it by taking the upper left and base right masterminds of each blob. This outcomes in an arrangement of bouncing boxes encompassing blobs that may contain at least one articles. Ensuing inquiry is compelled to utilize just the encased regions.

Stage 2: Sequential edges. Contribution to this stage comprises of the bouncing box data registered in organize 1. The items display immediate alters in course of movement, both spinning on the versatile and turning set up, in this manner subject to changing shadows and unusually blocking and un-impeding each other after some time. Casing to-outline changes are utilized to recognize singular items versus composites that may emerge because of shadows or impediment:

For each casing, contrast jumping enclose positions and those succeeding casing. On the off chance that container is evolving size, either:

- a. It might contain numerous articles impeding each other, or
- b. A singular inquiry may rotate, showing unequal widths.

If box holds measure yet changes position, it may contain no less than one things moving together.

For oversees in and blobs are either held as importance single articles or disconnected into various proposed objects. The system is reiterated for each and every dynamic packaging.

After a lone complete pass, a minute pass is race to include the spots of things in plots that as of now had not been detached.

The eventual outcome of this stage is a game plan of blobs, i.e., specific locale per diagram in which a proposed challenge may happen. The accompanying stage perceives each blob as one of the articles in the planning dataset.

Despite simply naming a few cases of (static) planning objects, the taking care of that occurs on the video achieves an extended course of action of normally named getting ready data containing differing positions, measure (expel), lighting, and fragmentary obstacle.

Stage 3: Object recognizable proof. Challenge recognizable proof using neighborhood invariant features relies upon the going with thought: key focuses isolated from the test picture and the reference show are composed against each other. Routinely used close-by interest point locators are the single-scale Harris discoverer [13] and the multi-scale Lowe's sDoG + Hessian marker [3]. The best performing interest point markers are the Harris-Affine and the Hessian-Affine [19]. Use of the SDoG + Hessian pointer, SIFT descriptors [3, 14] and a probabilistic theory rejection organize is to a great degree typical, because of a restricted degree to its close consistent speed. That system however encounters tremendous false-positive area rate because of its use of just an essential probabilistic theory expulsion mastermind, which can't decrease the amount of false positives. The L&R system [15-17] diminishes false positives by means of a few theory dismissal stages, yet is restricted in the edges, points of view, and measure of impediment that it can deal with [18]. Since our dataset comprises of items in changing points of view, broadly extraordinary edges and inclined toward finish impediment, we built up an adjusted and broadened framework.

Utilizing the yield of stage 2, blobs inside jumping boxes are coordinated against learned items. Applicant objects are relegated by means of a assignment, spill over, and decision strategy, to bring about a proposed distinguishing proof of each blob as one of the items in the preparation dataset. The coordinating strategy is executed as a two-pass calculation connected over the video dataset. In the primary pass:

For each blob perceived in organize 2, recognize the most reliable edge in which that blob has under 10% cover with some other blob.

Compare the blob against the planning set things using SIFT descriptors with second-nearest neighbor partition of 0.5 ("low point of confinement organize").

For each match obtained between a blob and a confident inquiry (CO) in the arrangement dataset, "select" the CO to be considered as a specific plausibility for that blob.

Sum all packaging occasions of chose COs and record happening plot numbers.

Return top five named COs for each blob.

The result is a game plan of five named COs that may be cases of each blob. The second go of the challenge distinguishing proof computation is performed for each of these assigned COs and returns the principle two propelled COs as the "flood" plausibility for that inquiry's identity.

Compare blob v. COs using SIFT descriptors with higher utmost (second nearest neighbor isolate 0.95).

Determine resemblance by methods for Hough change [see 14] (compartment sizes of 30 degrees for presentation center point, factor of 2 for scale center, and 0.25 times width and stature for each position center point).

For every repository B made in xvii), perform pre-relative transfer tests:

- a. Eliminate invalid containers (those with <4 votes)
- b. Eliminate container B if organize neighbor in Hough space has more votes.

c. If both of the direct relationship coefficients r_{REF} or r_{TEST} of intrigue focuses in the container B are > 0.9 , dispose of canister (the focuses lie in an almost straight line, and relative changes can be unsteady).

d. In the event that quick likelihood [21] related with receptacle B is < 0.9 , dispose of canister.

Calculate starting relative change TB utilizing matches in receptacle B. Matches from all non-dispensed with receptacles are added to container B.

For each canister B, distinguish connection between blob intrigue focuses and those in receptacle B. For intrigue focuses A1 and B1 in the test set and A1' and B1' in the preparation set:

a. Scale test: Compute proportion of the scale at A1 to the (Euclidean) separate A1B1, and the relating proportion for A1' and B1'. On the off chance that the proportion > 0.2 , take out the receptacle.

b. Orientation test: Compute relative introduction of the focuses (contrast between the focuses introduction as indicated by SIFT versus the line section between the focuses. On the off chance that the distinction of contrasts is $>$ example of 0.2, dispose of the canister.

For all receptacles that voted in favour of a specific question posture, process Lowe's likelihood [see 14] pL ; if $pL < 0.95$, take out the receptacle.

For all matches in all receptacles that voted in favour of the question posture, register pixel connection rP utilizing TB. In the event that $rP < 0.2$, wipe out this competitor protest posture.

Staying best-positioned competitors relate to the speculations of the arrangement of each question blob's character.

For each protest, four static perspectives were utilized for beginning preparing (left side, right side, top, base). Figure 1 delineates some illustrative occurrences of the items and a portion of the view information.



Fig. 1: Understanding with biological feature

For object recognition takes as information the unlabelled pictures of advanced photos from the road scene database (top) and produces programmed comments (base line). The orange bounding boxes are for people on foot ("ped") and autos ("auto"). The framework would have likewise recognized bikes if show. For sky, structures, trees and street, the framework utilizes shading coding (blue, dark colored, green and dim). Note the false location in the picture on the right. A development sign was mixed up for a pedestrian.

The database gives ground truth marks that connect every pixel with one of 32 semantic classes. The database tends to the requirement for exploratory information to quantitatively assess rising calculations. While most recordings are taped with settled position CCTV-style cameras, our information was caught from the point of view of a driving car. The driving situation expands the number and heterogeneity of the watched protest classes [21].

3. Results and discussion

Genuine visual handling commonly involves objects seen from various perspectives, in various lighting, changing after some time, incompletely impeded by different items. We have portrayed a group of calculations that tends to handling of items under these generally true conditions.

Simultaneously, we presented a novel undertaking, in which objects suspended from a versatile spin and turn; the point of the

calculation is to perceive and track the items after some time. The calculation consolidates attributes of various earlier distributed strategies, joining them in a novel form to empower this recently presented assignment.

We demonstrated that in this testing errand, the calculation performs extremely well over an arrangement of articles within the sight of progressing changes in area, lighting, impediment, size, and course of view. Having been perceived, each protest was effectively followed through the 1-min video.

It is remarkable that most work in moving recordings has adopted the strategy of utilizing enhanced static question acknowledgment with a specific end goal to accomplish better following after some time e.g., [1, 2]. In such cases, pictures are coordinated against preparing information to refresh their positions in progressive video outlines. Highlight descriptors, for example, SIFT [3], SURF [4], and GLOH [5] perform well for static picture coordinating, including great resistance for various perspectives and lighting [6-8].

In the present paper we go the other way, utilizing the way that similar articles are moving incrementally after some time and in this way display unsurprising limitations over minute to-minute changes. Not at all like past research [e.g., the above in addition to refs 9-12], our calculation is construct not with respect to following strong element descriptors over edges yet rather utilizing back to back time limitations to progressively enhance the execution of the question acknowledgment technique over slipped by time. Since successive casing pictures are comparative we can track singular questions over development. Along these lines we significantly increment the likelihood of acquiring a grouping of casings that are fundamentally the same as at least one of the couple of static named preparing pictures. We in this way acquire broad extra information with no extra preparing or naming expenses.

Encourage examination is continuous; it is trusted that the presentation of the new techniques will goad additionally thinks about into the connection amongst following and acknowledgment, and the new

versatile assignment (which we expect to make openly accessible on the web) is proffered as a possibly helpful (and effortlessly augmentable) dataset for additionally investigation of these issues. Affirmations: The creators might want to say thanks to Bennet Vance for productive talk and exhortation, and in addition his assistance in building the protest acknowledgment calculation. An exceptional on account of Javier Ruiz-del-Solar and PatricioLoncomilla for their assistance in understanding their L&R calculation. Correspondence ought to be sent to NimitDhulekar.

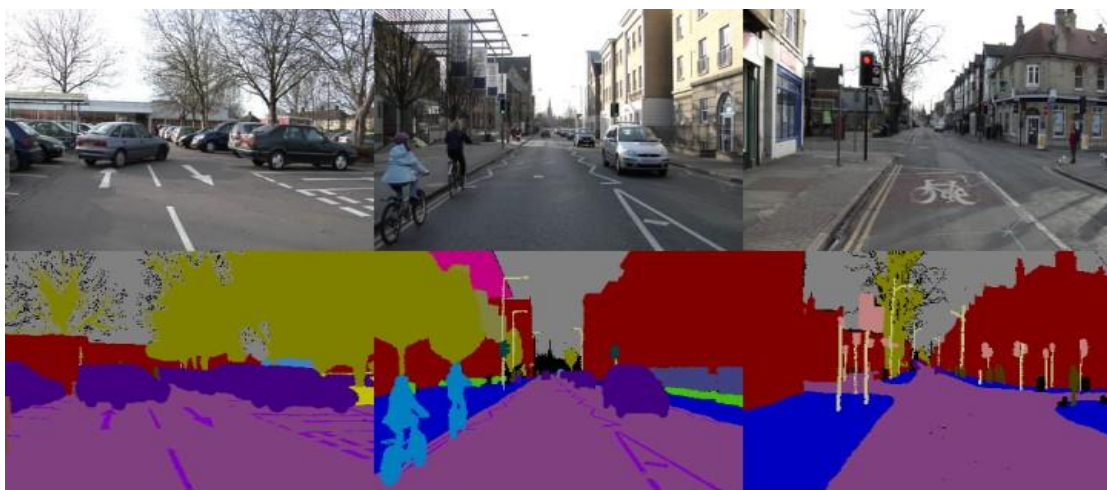


Fig. 2: An image consist of 101 frames, 204 frames and 171 frames respectively

More than ten minutes of great 30Hz film is being given, with relating semantically marked pictures at 1Hz and to some extent, 15Hz. The CamVid Database offers four commitments that are pertinent to protest examination analysts. To start with, the per-pixel semantic division of more than 700 pictures was indicated physically, and was then reviewed and affirmed by a moment individual for precision. Second, the high calibre and vast determination shading video pictures in the database speak to profitable stretched out term digitized film to those keen on driving situations or sense of self movement. Third, we taped alignment arrangements for the camera shading reaction and intrinsic, and registered a 3D camera posture for each casing in the groupings. At last, in help of growing this or different databases, we offer uniquely designed marking programming for helping clients who wish to paint exact class-names for different pictures and recordings. We assessed the importance of the database by measuring the execution of a calculation from each of three particular spaces: multi-class question acknowledgment, walker recognition, and mark engendering.

References

- [1] W.C., Gelfand, Ta D.N., Pulli K, and Chen N. SURFTrac: Efficient Tracking and Continuous Object Recognition Using Local Feature Descriptors. In IEEE Conference on Computer Vision and Pattern Recognition (CVPR), (2009), 2937-2944.
- [2] Foresti G.L.: Object Recognition and Tracking for Remote Video Surveillance. IEEE Transactions on Circuits and Systems for Video Technology, 9 (7), (1999).
- [3] C. Raghavendra, Dr. A Kumaravel, A. Anjaiah, "A New Hybrid Method for Image De-Noising In Light Of Wavelet Transform", International Journal of Pure and Applied Mathematics, Volume 116 No. 21 2017, 197-202.
- [4] K. Rajendra Prasad, C. Raghavendra, K Sai Saranya, "A Review on Classification of Breast Cancer Detection using Combination of The Feature Extraction Models", International Journal of Pure and Applied Mathematics, Volume 116 No. 21 2017, 203-208.
- [5] Mikolajczyk K. and Schmid C.: Performance Evaluation of Local Descriptors. IEEE Transactions on Pattern Analysis & Machine Intelligence, 27(10), (2005), 1615–1630.
- [6] P. Kiran Kumar, C. Raghavendra, Dr. S. Sivasubramanian, Exploring Multi Scale Mathematical Morphology for Dark Image Enhancement, International Journal of Pharmacy and Technology, Dec-2016, Vol. 8, Issue No.4, 23590-23597.
- [7] Grauman K. and Darrell T.: The Pyramid Match Kernel: Discriminative Classification with Sets of Image Features. Proceedings of IEEE International Conference on Computer Vision, 2, (2005), 1458–1465.
- [8] C. Raghavendra, A. Kumaravel and S. Sivasuramanyan, "Features Subset Selection using Improved Teaching Learning based Optimisation (ITLBO) Algorithms for Iris Recognition", Indian Journal of Science and Technology, Vol 10(34), DOI: 10.17485/ijst/2017/v10i34/118307, September 2017.
- [9] K. Rajendra Prasad, C. Raghavendra, Effective Mammogram Classification Using Various Texture Features, Journal of Advanced Research in Dynamical and Control Systems, Vol. 9. Sp- 12 / 2017.
- [10] Yuen J., TorrbaA.,Liu C., Sivic J., and Freeman W.T.: SIFT Flow: Dense Correspondence Across Different Scenes. In ECCV '08: Proceedings of the 10th European Conference on Computer Vision, (2008), 28-42.
- [11] C. Nalini, C. Raghavendra, K. Rajendra Prasad, "Comparative Observation and Performance Analysis of Multiple Algorithms on Iris Data", International Journal of Pure and Applied Mathematics, Volume 116 No. 9 2017, 319-325.
- [12] Wagner D., Reitmayr G., Mulloni A., Drummond T., and Schmalstieg D.: Pose Tracking from Natural Features on Mobile Phones. In ISMAR '08: Proceedings of the 7th IEEE/ACM International Symposium on Mixed and Augmented Reality, (2008), 125-134.
- [13] K. Rajendra Prasad, C. Raghavendra, Padakandla Vyshnav, "Intelligent System for Visualized Data Analytics A Review", International Journal of Pure and Applied Mathematics, Volume 116 No. 21 2017, 217-224.
- [14] Lowe D.: Local Feature View Clustering for 3D Object Recognition. In 2001 IEEE Computer Society Conference on Computer Vision and Pattern Recognition (CVPR'01), 1, (2001), 682-688.
- [15] Ruiz-del-Solar J and Loncomilla P. Gaze Direction Determination of Opponents and Teammates in Robot Soccer. Lecture Notes in Computer Science, 4020, (2006), 230–242.
- [16] Ruiz-del-Solar J. and Loncomilla P. A Fast Probabilistic Model for Hypothesis Rejection in SIFT Based Object Recognition. Lecture Notes in Computer Science, 4225, (2006), 696–705.
- [17] Loncomilla P. & Ruiz-del-Solar J.: Robust Object Recognition Using Wide Baseline Matching for RoboCup Applications. Lecture Notes in Computer Science, 5001, (2008), 441–448.
- [18] C. Raghavendra, A. Kumaravel, S. Sivasubramanian, "Iris Technology: A Review on Iris Based Biometric Systems for Unique Human Identification", International Conference on Algorithms, Methodology, Models and Applications in Emerging Technologies – 2017, association WithIEEE.
- [19] Mikolajczyk K., Tuytelaars T., Schmid C., Zisserman A., Matas J., Schaffalitzky F., Kadir T., and Van Gool L.: A Comparison of Affine Region Detectors. International Journal of Computer Vision 65(1), (2005), 43–72.
- [20] Granger R.: Engines of the Brain: The Computational Instruction Set of Human Cognition. In AI Magazine, 27, (2006), 15-32.
- [21] <http://mi.eng.cam.ac.uk/research/projects/VideoRec/CamVid/>
- [22] T. Padmapriya and V. Saminadan, "Improving Throughput for Downlink Multi user MIMO-LTE Advanced Networks using SNR approximation and Hierarchical CSI feedback", International Journal of Mobile Design Network and Innovation-Inderscience Publisher, ISSN : 1744-2850 vol. 6, no.1, pp. 14-23, May 2015.
- [23] S.V.Manikanthan and K.srividhya "An Android based secure access control using ARM and cloud computing", Published in: Electronics and Communication Systems (ICECS), 2015 2nd International Conference on 26-27 Feb. 2015,Publisher: IEEE,DOI: 10.1109/ECS.2015.7124833.
- [24] Rajesh, M., and J. M. Gnanasekar. "Path observation-based physical routing protocol for wireless ad hoc networks." International Journal of Wireless and Mobile Computing 11.3 (2016): 244-257.