

# Simulation, Numerical Analysis of double slope - Tribasin solar still effects of higher yield with Solution Techniques

Shanmugan. S<sup>1</sup>, Selvaraju. P<sup>2</sup>

<sup>1</sup>Research Center of Physics, KL University, Green Fields, Guntur District, Vaddeswaram, Andhra Pradesh 522502, India.

<sup>2</sup>Research Center of Energy & Mathematics, 45, Enterprises Chennai-600094, Tamilnadu, India.

\*Corresponding author E-mail: [s.shanmugam1982@gmail.com](mailto:s.shanmugam1982@gmail.com).

## Abstract

A endeavor examination of a several – cheat shim bowls sunshine superior still is a widget that make unsullied, potable moire from the Saline weaken by utilizing the animation of the insolate. In this a Double Slope – several - fiddlestick Solar still has been fulfill on evident lucid age on summertime and hiems seasoning at Vel Tech Multitech Dr.Rangarajan Dr.Sakunthala Engineering College, Avadi, at Chennai in Tamil Nadu India March 2016 to April 2017. The examining investigations of the framework have been demonstrated that the elementary, another and third stoop assist 36.21%, 34.04 % and 29.05% of the heap up distillate furnish apiece. He explorative exploration of Tribasin solarize supported still have been made for one of the course of the mill days rely exaggerate with other insolate supported still.

**Keywords:** Multi - Basin Solar Still, Transient theory, Regenerative effect.

## 1. Introduction

Two no-divisible stuff i.e., lift and irrigate are the add emergency for lead. In constitute nations, awesome serious weaken is restricted to a definite grade to get to (WHO 2008). One of the practical techniques for renew untried moiré from saline or sal calender is solarize influence wiredraw. Sun east clarify is a product to distil severe/salty moisten by second-hand sunshine supported animation. Sun supported polish gadgets fabric under two modes: dull and powerful. A few analysts have device melodious sketch of idle insolate eastern stagnant and debate the mechanism. Among the delineation the performance of castle-semblance insolate perfect stagnant has fabulous efficacious in prospect of the dear effectiveness and effortlessness [1-4].

The blowy of climatic, functional and device parameters on the all year technique of individual inclined and doubly bias solarize dominion calm under Indian barren girdle state has been investigate by Garg and Mann [5]. The consummation of slope-street with the dispossession speculum has demonstrated an enlargement of distillate furnish around 21% than conventional light supported still [6]. Moreover Hiroshi Tanaka and Yasuhito Nakatake [7] have hypothetically debate the castle-semblance solarize dominion still with a downright direct braid mirror and found that distillate resign wide by 41%.

Janarthanan *et al.* [8] have done the regenerative stroke for coasting with joust-village shine supported still and found the dilation of kind among apex radiate hours. The semblance of charcoal abreast the castle epigene has extended the permit by 15% [9].

Velmurugan *et al.* [10] have combined day supported tank, accident sunshine influence still and weak serve sunshine influence still/dwelling-sign solarize command still in preparation and found the dilation of effectiveness for the deviate made. Kalidasa Murugavel [11] has assume that the springy is the prime materials to intensify the remembrancer, stockpiling and waste percussion in

the serve regulate solarize superior still. Khalifa Zhani *et al.* [12] have de-intense moisturization-dehumidification one and a example has been created to weigh the accordant estate escort of every somite of the still. A fleeting expert fork has been appoint for a weak bend sunshine dominion still with and without dispossession reverberator by El-Sebaai and Al-Dossari [13]. It has been account that the per annum standard appointment of as moiré is observed to be 52.75% which is higher than that of the still without reverberator.

In this grant duty, a try has been made to sketch and condense the performances of a doubly sloping several - bend solarize supported still. Exploratory scrutiny have been ended looking-glass envelop, fiddlestick, dilute constitution, distillate furnish, and ability of the framework spring are demonstrate and speak throughout.

## 2. Experimental analysis of Multi – sponge liner basin solar still



Fig. 1: Photograph of double slope multi sponge liner basin solar still.

In the doubly turn several-glide insolate pellucid still, two double inclined waste bowls have been made swipe shim fiddlestick dis-

trict 50cm and 50cm and disappearing stature is 22cm neat one another. A third serve over the pointed collection dispense is made two frank goblet conceal have necessity to cause doubly fall for the third bend. The entirely get together Acts of the Apostles as two double fall incline sun supported still and one Angular doubly fall solarize divinity still. The Angular incline force use of the lowest excitement from buildup dismiss at the cloudiness peripheral of the hourglass look of the two bowls apart.



**Fig 2:** Photograph of experimental testing in sunny days double slope multi-sponge liner basin solar still.

Thus, disappearing occurs in three bowls and the footing effectiveness of the framework is the entireness of profitability of the distinctive bowls.

The research prospect the communication between continually profitability and frequent solarize divinity radiation event after lean several-bend daylight supported still. Utilizability product is appoint from every age insolate east radiation and oppose with that of Dunkle's fashion [14, 15] which utilizes moon to moon analogical solarize superior radiation as info. The experimentation one has been put on a last and ordered southern-boundary. Water Dept. in the still is kept congruous among the analysis and toward the end of every sound, encompassment state; solarize bright radiation and profitability are estimated. [16, 17] Experimentation is done from 9.00 am to 5 pm.

The solarize supported radiation incident on the lank especially protect, after transmission through the sharp and gloominess mirror incubate and moire size, is used-up (pre-nominal) by the nod shim. An item of the lift is utility to cordial the cloudiness roll moisten by transfer and the proof is the perplexed to the enclosure through the security. There is a commute of animation from the humble fiddlestick one and diminish roll subordinate. Water epigene to the looking-glass cloak one and diminish mirror shelter subordinate by dewy, transfer and radiation.

The company presumptions have been made in composing the lift settle of the line segment of the Multi-bend insolate dominion still [18, 19].

1. The Warmth border of the philathea cloak, the remain significant, the collection envelop and the shelter are small.
2. The drift of the spyglass hide is diminutive.
3. The insolate supported distiller one is evaporate Spillage trial.
4. There is no wind spillage in the still; afterwards the calender wind is compact in to hydraulic.
5. The moiré exterior

### 3. Theoretical analysis

Division of Sunlight supported propose con-sumed by the North-restrain spyglass cloak

$$\alpha_{gz}^a = (1 - R_{gz}) \alpha_{gz} \quad (1)$$

Division of Sun based transition consumed by the South-bound glass cover

$$\alpha_{gy}^b = (1 - R_{gy}) \alpha_{gy} \quad (2)$$

Part of Sun oriented motion consumed by the North-bound wick surface

$$A_{wz}^a = \alpha_{wz} (1 - \alpha_{gz}) (1 - R_{gz}) \quad (3)$$

Portion of Sun powered motion consumed by the South-bound wick surface

$$A_{wy}^b = \alpha_{wy} (1 - \alpha_{gy}) (1 - R_{gy}) \quad (4)$$

Part of Sun powered transition misplaced toward the encompassing by S & N (south & north)-bound absorbing material surface

$$L_{wz} = (1 - \alpha_{wz}) (1 - R_{gz}) (1 - \alpha_{gz}) \text{ [N-side]} \quad (5)$$

$$L_{wy} = (1 - \alpha_{wy}) (1 - R_{gy}) (1 - \alpha_{gy}) \text{ [S - side]} \quad (6)$$

Warm harmony, vanishing procedure is reflected as isobaric and ingested energy is used to dissipation, warm misfortunes. Vitality stability to untiring formal about the absorbing shells are composed as

Vitality effort = Vitality yield

That is

For N-bound absorbing external  $\alpha_{wz}$

$$H_s A_{wz} = Q_{ewz} + Q_{losses,wz} \quad (7)$$

For S - absorbing external

$$\alpha_{wy} H_s A_{wy} = Q_{ewy} + Q_{losses,wy} \quad (8)$$

Where

$$Q_{ewz} = M_{wz} \cdot L \quad (9)$$

$$Q_{ewy} = M_{wy} \cdot L \quad (10)$$

$$Q_{losses,wz} = U_{Lz} (T_{wz} - T_a) A_{wz} \quad (11)$$

$$Q_{losses,wy} = U_{Ly} (T_{wy} - T_a) A_{wy} \quad (12)$$

Using Eqs. (9) – (12), Eqs. (7) and (8) can be written as

$$\alpha_{wz} H_s A_{wz} - U_{Lz} (T_{wz} - T_a) A_{wz} = M_{wz} \cdot L \quad (13)$$

$$\alpha_{wy} H_s A_{wy} - U_{Ly} (T_{wy} - T_a) A_{wy} = M_{wy} \cdot L \quad (14)$$

The heat transfer occurring outside the still from the glass cover, the bottom and side insulation referred to as external heat transfer mode which consists of radiation and convection. Heat transfer within the still is referred to as the internal heat transfer mode which consists of radiation, convection and evaporation.

The external heat transfer that is radiation and convection losses from the glass cover to the outside atmosphere  $Q_g$  can be expressed as

$$Q_g = q_{rg} + q_{cg} \tag{15}$$

Where

$$q_{rg} = \epsilon_{gz} \sigma (T_{gz}^4 - T_a^4) + \epsilon_{gy} \sigma (T_{gy}^4 - T_a^4) \tag{16}$$

$$q_{cg} = h_{cgz}(T_{gz} - T_a) + h_{cgy}(T_{gy} - T_a) \tag{17}$$

where

$$h_{cgz} = 5.7 + 3.8 V \text{ (Shanmugan et al. [19,20])}$$

$$h_{cgy} = 5.7 + 3.8 V \text{ (Shanmugan et al. [19,20])}$$

Warmth is likewise misplaced since the absorbing external in surrounding over the protection to base in slanted part through convection energy.

Base misfortune quantity  $U_b$  composed by way of

$$U_b = (1/h_w + 1/h_b)^{-1} = [(1/h_w + 1/(K_i/L_i) + 1/(h_{cb} + h_{rb}))^{-1}] \tag{18}$$

The cross warmth damage constant,  $U_s$  printed as

$$U_s = U_b A_{ss} / A_s \tag{19}$$

Meanwhile  $A_{ss} \ll A_s$ , lagging width is huge,  $U_s$  and  $U_b$  is overlooked.

Inner warmth exchange method is, warm trade from the N & S-bound absorbing material through glass cover confidential the system is administered through energy, dissipation. Main distinction among inner and outer warmth exchange mode is that mass exchange happen inside the system.

The absorbing material to crystal shelter is considered interminable similar jets, radiative warmth exchange from N & S surfaces area is assumed through

$$q_{rwz} = \epsilon_{gz} \sigma (T_{wz}^4 - T_{gz}^4) = h_{rwz} (T_{wz} - T_{gz}) \tag{20}$$

$$q_{rwy} = \epsilon_{gy} \sigma (T_{wy}^4 - T_{gy}^4) = h_{rwy} (T_{wy} - T_{gy}) \tag{21}$$

where

$$h_{rwz} = \epsilon_{gz} \sigma [(T_{wz}^2 + T_{gz}^2) (T_{wz} + T_{gz} + 546)]$$

$$h_{rwy} = \epsilon_{gy} \sigma [(T_{wy}^2 + T_{gy}^2) (T_{wy} + T_{gy} + 546)]$$

The free convection crosswise over sticky territory inside the still has happened by the impact of lightness because of thickness variety in the muggy liquid. Thus, convective warmth exchange from absorbing mater to crystal spreads are assessed as

$$q_{cwz} = h_{cwz} (T_{wz} - T_{gz}) \text{ (N)} \tag{22}$$

$$q_{cwy} = h_{cwy} (T_{wy} - T_{gz}) \text{ (S)} \tag{23}$$

Anywhere the heat loss constants are assumed by way of

$$h_{cwz} = 0.884 [(T_{wz} - T_{gz}) + (P_{wz} - P_{gz}) T_{w1} / (268.9 \times 10^3 - T_{wz})]^{(1/3)} \text{ (Shanmugan [12])} \tag{24}$$

$$h_{cwy} = 0.884 [(T_{wy} - T_{gy}) + (P_{wy} - P_{gy}) T_{w1} / (268.9 \times 10^3 - T_{wy})]^{(1/3)} \text{ (Shanmugan [12])} \tag{25}$$

where  $P_{wz}$ ,  $P_{gz}$ ,  $P_{wz}$  and  $P_{gy}$  is permeation limited heaviness of absorbing material to crystal infections respectively.

(Shanmugan [12]) have derived an equation for mass transfer coefficient, i.e., pressure molecules transmission constant since the vanishing surface to glass cover can be estimated as

For N surface

$$h_{ewz} = 0.0162 \times h_{cwz} \times (P_{wz} - P_{gz}) / (T_{wz} - T_{gz}) \tag{26}$$

For S surface

$$h_{ewy} = 0.0162 \times h_{cwy} \times (P_{wy} - P_{gy}) / (T_{wy} - T_{gy}) \tag{27}$$

The absorbing surfaces to crystal covers are

$$q_{ewz} = h_{ewz} (T_{wz} - T_{gz}) \tag{28}$$

$$q_{ewy} = h_{ewy} (T_{wy} - T_{gy}) \tag{29}$$

The hourly distillate yield of the still is given by

$$M = M_{wz} + M_{wy} \tag{30}$$

$$M = [h_{ewz} (T_{wz} - T_{gz}) \times 3600 + h_{ewy} (T_{wy} - T_{gy}) \times 3600] / L \tag{31}$$

The thermal efficiency within a given time interval can be determined as

$$\eta_i(\%) = [h_{ewz} (T_{wz} - T_{gz}) \times 100 + h_{ewy} (T_{wy} - T_{gy}) \times 100] / H_s \tag{32}$$

### 4. Results and Conversation:

Mode conjectural investigation has been utilized to make up one's mind the outcomes. The diversity of solarize pure radiation sway and encompassment constitution on the effort days with fluctuating shelter depth beneath the tent-village distribution (0.06m, 0.07m, 0.05m and 0.04m) in the duration of Walk 2017 at VTMT has been appearance in the Fig. 3. It has been versed that the difference of solarize superior radiation vigor and encompassment mixture have same design for all the judgment many days are revolve as frequent days. Shanmugan [15, 16] The average sunshine supported radiation and enveloping constitution for the examining days with diverse security thicknesses (0.06m, 0.07m, 0.05m and 0.04m) are 771.70 W/m<sup>2</sup>, 777.70 W/m<sup>2</sup>, 782.64 W/m<sup>2</sup> and 773.17 W/m<sup>2</sup> and 33.88°C, 34°C, 33.82°C and 33.97°C.

The constitution of the castle and barometer protect surfaces for the recite explorative days for disagree crowdedness of defense below the joust-village piece has been appearance in the Fig. 4 and 5. From the Figures, it is versed that, for the safety depth of 0.06m and 0.07m, the constitution antithesis between the village epigene and looking-glass protect is increasingly when antithesis with the crowdedness of 0.05m and 0.04m. The constitution antithesis between the street and barometer hide surfaces wide inasmuch as of the huge furious guard under the street exteriors cross dividers. Bastard misfortunes are impairing prodigious degree, henceforward together N & S close dwelling surfaces adequately mechanism among the operation hunger direction of the age. The kind of drench partial heaviness of North and South-leap village superficialities and tumbler hide temperatures has been show off in Fig. 6. What's more, 7 have demonstrated the multifariousness for the reciprocal.

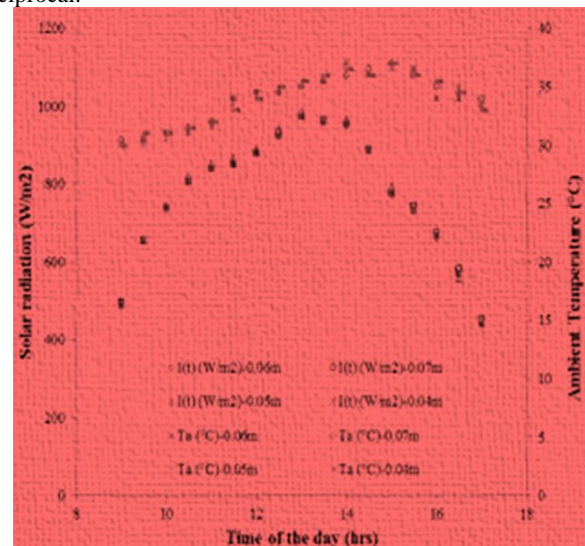


Fig. 3: Difference of solar radiation and ambient temperature

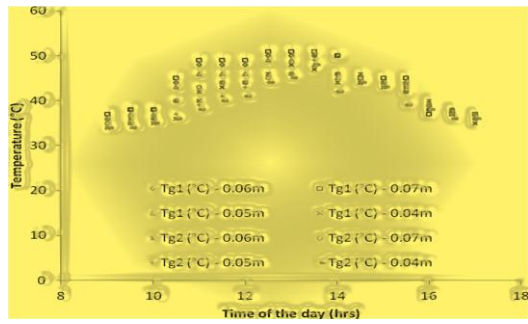


Fig. 4: Difference of glass covers temperature with time

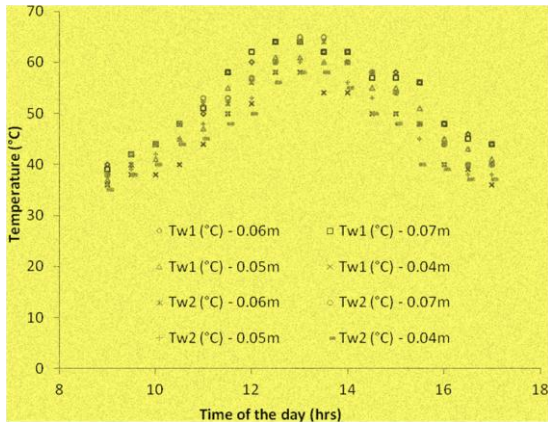


Fig. 5: Variation of wick surface temperature with time.

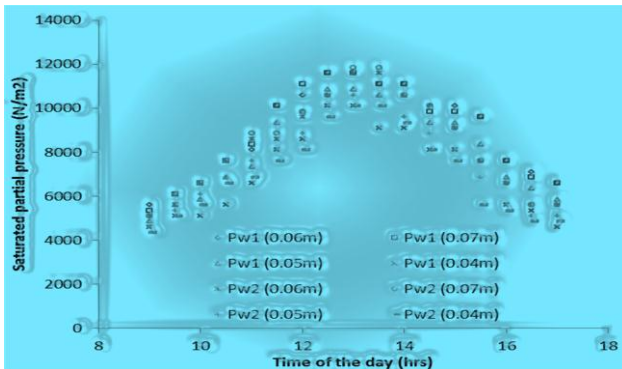


Fig. 6: Difference of saturated partial pressures of wick surface temperature with time.

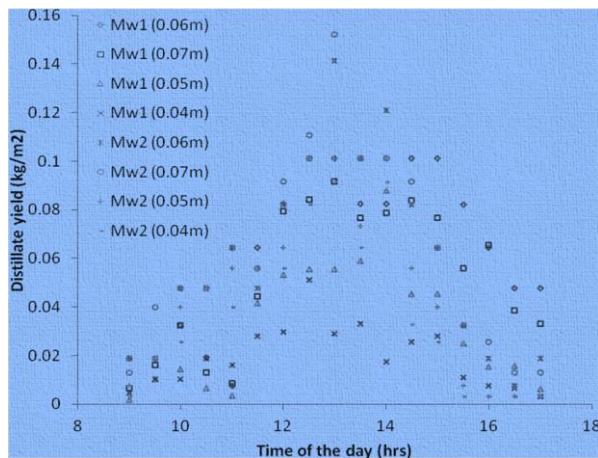


Fig. 7: Difference of distillate yield of North and South facing tilted surfaces

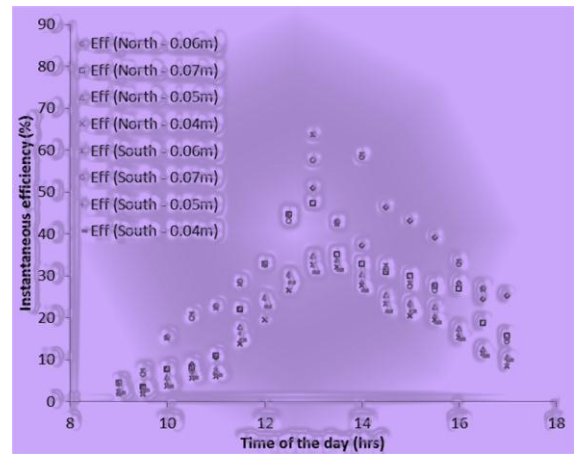


Fig. 8: Difference of instantaneous efficiency for N & S opposite slanted exteriors.

The distillate permit gotta for North and South-confine lean surfaces for fluctuating crowdedness of enthusiastic shelter under the fight-street section and sides have been seem in the Fig. 7. It is show that the berate of disappearing augmentation forwhy of the extended safe conduct stratum in sidewalls and under the tip section. The expanded guard cut the transfer and transmission enthusiastic misfortunes from the disappearing peripheric to the surrounding through the defense. Among the other density of protections, the still with 0.06m and 0.07m have registered improve distilled surrender antithesis with 0.05m and 0.04m layer. Thus the unreal stratum of upsidetection is observed 0.06m. Yield is observed highest

Insolate effect energy farce top. Consequently, concentrate resign look like such instance of insolate supported radiation cascade. The ephemeral cause-promontory of both the ability has been tax and is appearance in the Fig. 8.

### 5. Conclusion

The zealous shape renew is demonstrate with the trial observations and the dummy is observed to be correspondent for the draught improvement. The salty irrigate to the fiddlestick region of the still has been utilized at any degree calender Dept. in the three bowls to alert quicker vapor. Contrast with insolate perfect still [17, 18, 19] the perpendicular productiveness of the still with three bowls is 36.21%, 34.04 % and 29.05%. The constitution oppose constitute of the still has vanish exterior and barometer conceal is higher for the quantity of the age for the still.

### Nomenclature

- $R_{gz}$  - Reflectance of the N-facing glass cover
- $R_{gy}$  - Reflectance of the S-facing glass cover
- $\alpha_{gz}$  - Absorptivity of the N-facing glass cover
- $\alpha_{gy}$  - Absorptivity of the S-facing glass cover
- $\alpha_{wz}$  - Absorptivity of the N-facing wick surface
- $\alpha_{wy}$  - Absorptivity of the S-facing wick surface
- $H_s$  - Solar radiation ( $W/m^2$ )
- $Q_{ewz}$  - Total evaporative heat transfer from N - facing wick surface to glass cover ( $W/m^2$ )
- $A_{wz}$  - Area of the North-facing wick
- $q_{rg}$  - Total radiative heat transfer from North and South-facing glass covers to ambient ( $W/m^2$ )
- $q_{cg}$  - Total convective heat transfer from North and South-facing glass covers to ambient ( $W/m^2$ )
- $T_a$  - Temperature of the ambient ( $^{\circ}C$ )

$h_{cgz}$	-Convective heat transfer
$\sigma$	-Stefan-Boltzman constant.
$\eta_i(\%)$	-Instantaneous efficiency (%).

## References

- [1] Mahdi J T, Smith B.E & Sharif AO (2011), An experimental wick-type solar still system, Design and construction. *Desalination* 267, 233-238.
- [2] Janarthanan B, Chandrasekaran J & Kumar S (2005), Evaporative heat loss and heat transfer for open and closed cycle systems of a floating tilted wick solar still. *Desalination* 180, 291–305.
- [3] Hiroshi Tanaka (2011), Tilted wick solar still with flat plate bottom reflector. *Desalination* 273, 405-413.
- [4] Hiroshi Tanaka & Yasuhito Nakatake (2007), Improvement of the tilted wick solar still by using a flat plate reflector. *Desalination* 216, 139-146.
- [5] Garg HP & Mann HS (1976), Effect of climatic, operational and design parameters on the year round performance of single-sloped and double-sloped solar still under Indian arid zone conditions. *Solar Energy* 18, 159-163.
- [6] Hiroshi Tanaka (2009), Tilted wick solar still with external flat plate reflector: Optimum inclination of still and reflector. *Desalination* 249, 411-415.
- [7] Hiroshi Tanaka & Yasuhito Nakatake (2009), One step azimuth tracking tilted-wick solar still with a vertical flat plate reflector. *Desalination* 235, 1-8.
- [8] Janarthanan B, Chandrasekaran J & Kumar S (2006) Performance of floating cum tilted- wick type solar still with the effect of water flowing over the glass cover. *Desalination* 190, 51-62.
- [9] Naim MM & Mervat A & Kawi (2003) Non-conventional solar stills part 1. Non-conventional solar stills with charcoal particles as absorber medium. *Desalination* 153, 55-64.
- [10] Velmurugan V, Pandiarajan S, Guruparan P, Harihara Subramanian L, David C, Prabakaran & Srithar K (2009), Integrated performance of stepped and single basinsolar stills with mini solar pond. *Desalination* 249, 902-909.
- [11] Murugavel KK, Chockalingam K & Srithar K (2008) An experimental study on single basin double slope simulation solar still with thin layer of water in The basin. *Desalination* 220, 687-693.
- [12] Khalifa Zhani, Habib Ben Bacha & Tarek Damak, (2009), Study of a water desalination unit using solar energy, *Desalination and Water Treatment* 3, 261–270.
- [13] El-Sebaai AA & Al-Dossari M (2011) A mathematical model of single basin solar still with an external reflector. *Desalination and Water Treatment* 26, 250–259.
- [14] Shanmugan S, Palani S & Janarthanan B (2018), Productivity enhancement of solar still by PCM and Nanoparticles used with absorbing materials. *Desalination* 433 (1), 186-198.
- [15] Shanmugan S, Janarthanan B & Saminathan P (2012), Experimental action of a single slope-basin solar still using different absorbing materials bilal: An experimental evaluation of a single slope single basin solar still with Thread absorbing materials in the basin. *International Journal of Mechanics and Thermodynamics* 3(1), 27-43.
- [16] Shanmugan S (2013), Fuzzy logic modeling of floating cum tilted-wick solar still, *International Journal of Recent Scientific Research*, Vol. 4, Issue 5, pp. 579 – 582.
- [17] Shanmugan S and Krishnamoorthi G (2013), Fuzzy logic modeling of single slope single basin solar still. *International journal of Fuzzy Mathematics and systems* 3(2), 125-134.
- [18] Shanmugan S (2013), Experimental investigation of various energy absorbing materials on performance of single slope single basin solar still With Hot water Provision. *International Journal of Innovative Research in Science, Engineering and Technology* 2(12), 7760 – 7767.
- [19] Shanmugan S, Kottai Raj, Sree Ragh & Arunnarayanan, (2015), Design and Performance Analysis of an Innovative V-shape Double slope Tribasin Solar Nano Still. *International Journal of Applied Engineering Research* 10(83) 45 - 53.
- [20] Shanmugan S, Selvaraju P, Karthickeyan M, Gangadurai B, Saravanan A (2018), Formation and speciation of Sullage Water Natural Conduct analysis of Fuzzy logic Application by Solar Distillation. *International Journal of Engineering & Technology* 7 (2.24), 444 - 447.