

# Power quality management using statcom for grid interfaced wind turbine controlled by microcontroller

Mohan Singh Panwar<sup>1\*</sup>, Dr. Ajay Kumar Bansal<sup>2</sup>

<sup>1</sup> M. Tech Student

<sup>2</sup> Professor

\*Corresponding author E-mail: [mohanpanwar@ucwl.jkmail.com](mailto:mohanpanwar@ucwl.jkmail.com)

## Abstract

Input source for wind power generation in wind turbine is wind. Variation of wind is uncontrolled. Quality of power generated in a windmill is very poor due to uncontrolled and fluctuated nature wind. As per International Electro-technical Commission standard, IEC-61400 norms the power quality and measurements of wind turbine is to be calculate. Electrical energy generated from wind power is based on minimum pollution of environment as comparative to conventional sources of generation. In a grid connected wind power system there are some power quality issues. In grid integrated wind power systems, quality of power is measured by active power, reactive power & variation of voltages measured under guidelines of national & international standards. In this proposed system, the energy generated by wind turbine is converted to DC & DC bus is charged. A microcontroller regulated PWM inverter convert this DC voltage to AC to feed it to grid. The proposed DC Bus is augmented by PV (photovoltaic) charged Battery Based PWM controlled STATCOM.

**Keywords:** Wind Energy; PWM Inverter; Power Quality Improvement; STATCOM.

## 1. Introduction

Demand of electrical energy increased the requirement of fuel to generation; in this respect non-conventional sources are in trend and environment friendly. It is necessary for Rajasthan to use vast potential of wind and solar power in huge quantity, which helps in development of state. Rajasthan and centre government have launches many scheme for motivation and growth of wind and solar power. The problem arises with wind sources is its fluctuation in wind speed and hence variation in generated power. To overcome this issue, control structure is to me integrated with the plant. Power quality of this is observed with the parameters of voltage regulation, active and reactive power.

Total power generated from wind in this world is 12 % (approx. 486.8 GW) where as in India its 9.1% (approx. 28,700 MW) of total power generation [1]. The data showing the present situation of installed units in India up to 2016. It shows that the maximum units is installed in Tamil Nadu (7694.3 MW) and achieved target of 32287.27 MW up to April 2017[2].

## 2. Causes of deficiency in the power quality

Power quality depends on some parameters, to maintain power quality these parameters is controlled, and effect of these parameters are impact on voltage, current and frequency. Causes and effects due to these parameters are

### a) Interruption

Interruption in the system means there is variation in voltage and current and it will be varying more than 90% of actual and it will be in system for more than 1 min. Similarly, there is another cause of fault that is notching which is from the rectifiers used in converters due to their finite inductive values [1].

### b) Voltage Sag

Voltage sag is another example of occurrence of disturbance in system. In this, the voltage amplitude is decreased in similar percentage as in interruption. This occurs mainly due to operation of heavy machines in industry as of their heavy starting torque [1].

### c) Voltage Swell

There are tap changing equipment's in the substation and that is changes as per requirement during running line. This causes a swell in the line voltage and the RMS line voltage increase up to double value of the nominal voltage and this fault remains in the system to the same time as sag and interruption in the system i.e. 0.5 to 1 minute [2].

### d) Transients

Another impact on power quality is due to transients. In distribution system when lightning strikes and switching of heavy equipment happens then transients are injected in the power system. This can damage or force to shut down the system equipment and a bidirectional change in voltage or current can be observed in the system. By using FACTS devices this effect of transients are compensated in power system [2].

### e) Harmonics

Voltage fluctuations in the power line are occurs due to cycloconverters, arc furnaces, and other systems that draw current, which is not synchronized with the line frequency. Very short changes are occurring due to harmonics [3].

## 3. Statcom static synchronous compensator

FACTS devices are used to compensate reactive power, STATCOM is one of them to generate or absorb reactive power in transmission line. It is used to control given parameters to gain stability of the power system network. This device works on its



$$\text{Duty} = (160 - \text{AC Voltage}) * 3$$

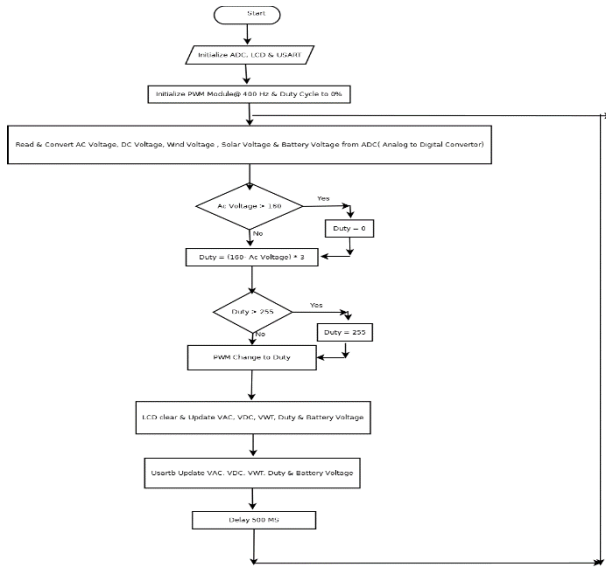


Fig. 5: Flowchart.

### 7. Results

Table 1: Simulated Wind on Load 1

Sr.No.	V <sub>wind</sub> (wind turbine) (Volt)	V <sub>dc</sub> (DC Bus) (Volt)	V <sub>ac</sub> (Grid Bus) (Volt)
0	0	0	0
1	2	2	4
2	3	3	10
3	4	4	17
4	5	5	23
5	6	6	40
6	7	7	50
7	8	8	60
8	9	9	65
9	10	10	68
10	11	11	71
11	12	12	78

Table 2: Simulated Wind Supported by STATCOM on Load 1

Sr.No.	V <sub>wind</sub> (wind turbine) (Volt)	V <sub>dc</sub> (DC Bus) (Volt)	V <sub>ac</sub> (Grid Bus) (Volt)	Remark
0	0	10.2	64	
1	2	10.2	64	
2	3	10.2	64	
3	4	10.2	64	
4	5	10.2	64	
5	6	10.2	64	
6	7	10.2	64	
7	8	10.2	64	
8	9	10.2	64	
9	10	10.2	64	Constant output
10	11	10.2	64	
11	12	10.2	64	

Table 3: Simulated Winds on Load 3

Sr. No.	V <sub>wind</sub> (wind turbine) (Volt)	V <sub>dc</sub> (DC Bus) (Volt)	V <sub>ac</sub> (Grid Bus) (Volt)
0	0	0	0
1	2	2	10
2	3	3	10
3	4	4	10
4	5	5	10
5	6	6	15
6	7	7	23
7	8	8	25

Table 4: Simulated Wind Supported by STATCOM on Load 3

Sr.No.	V <sub>wind</sub> (wind turbine) (Volt)	V <sub>dc</sub> (DC Bus) (Volt)	V <sub>ac</sub> (Grid Bus) (Volt)	Remark
0	0	10.2	38	
1	2	10.2	38	
2	3	10.2	38	
3	4	10.2	38	
4	5	10.2	38	
5	6	10.2	38	
6	7	10.2	38	
7	8	10.2	38	
8	9	10.2	38	Constant output
9	10	10.2	38	
10	11	10.2	38	

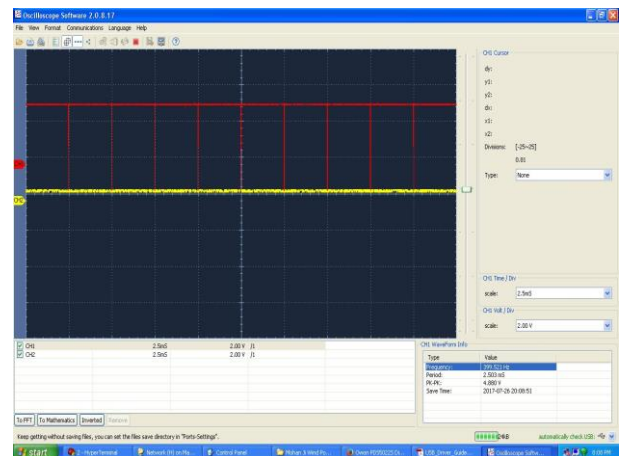
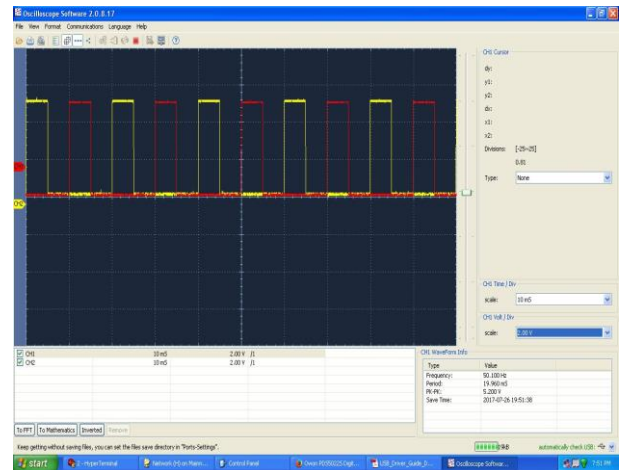


Fig. 6: Complimentary PWM on 50 HZ.

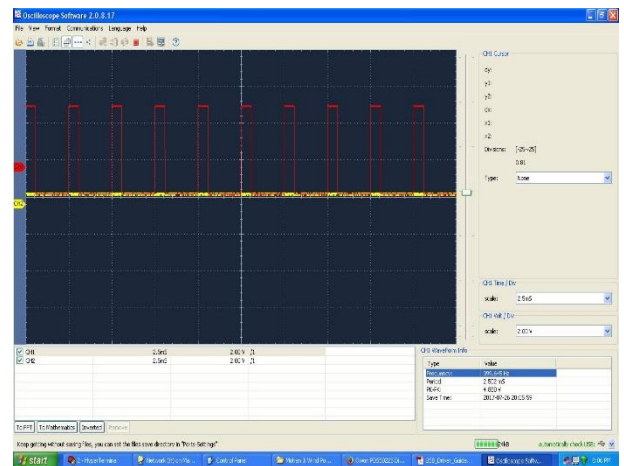


Fig. 7: PWM with Full Wind and at NoLoad.

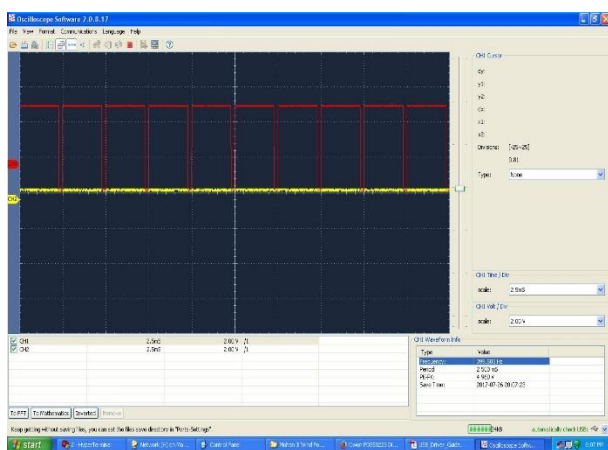


Fig. 8: PWM with Full Wind and at Load 1.

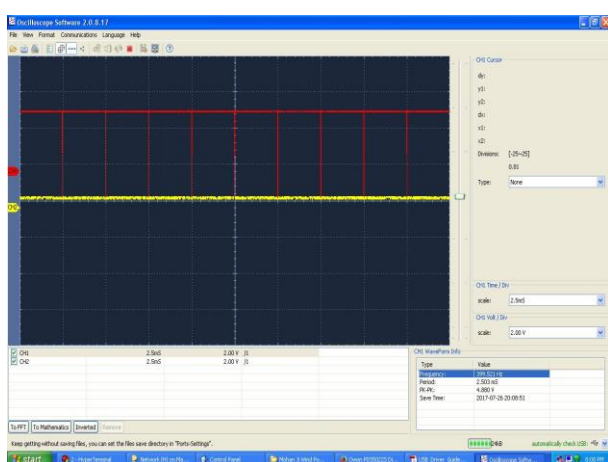


Fig. 9: PWM with Full Wind on Load 2 and 3.

## 8. conclusions

In this paper, we present a unique method of wind Generated power Quality Management. Use of advanced microcontroller technology allows for power quality improvement in grid connected wind generation system & with nonlinear load. The power quality issues & its consequences on the consumer & electricity grid are observed & rectified by having an advance DC Bus based Electronic PWM Inverter for grid power injection augmented battery charged of STATCOM batteries. The proposed system has proved by a warning prototype as discussed in results, & thus we are able to provide for a highly efficient power Quality Management System for Grid Interfaced wind Energy Generation System.

## References

- [1] Global wind energy council (GWEC), "Global Wind Report, Annual Market Update-2016", 2016, pp-48.
- [2] Ministry of new and Renewable Energy (MNRE) Programme Scheme wise Physical Progress in 2017-18 & cumulative upto the month of April 2017 www.mnre.gov.in.
- [3] C. Han, A. Q. Huang, M. Baran, S. Bhattacharya, and W. Litzenberger, "STATCOM impact study on the integration of a large wind farm into a weak loop power system" IEEE Transactions on Energy Conversion, vol. 23, no. 1, pp. 226232, March 2008.
- [4] J. Manel, "Power electronic system for grid integration of renewable energy source: A survey" IEEE Transactions on Industrial Electronics, vol. 53, no. 4, pp. 10021014, 2006, Carrasco.
- [5] R. Billinton and Y. GAO, "Energy conversion system models for adequacy assessment of generating systems incorporating wind energy", IEEE Transaction on Energy Conversion, volume.23, no. 1, pp. 163169, December 2008.
- [6] S. W. Mohod and M. V. Aware, "Micro wind power generator with battery energy storage for critical load", in IEEE Systems Journal, Volume6, no. 1, September 2012.

- [7] S. W. Mohod and M. V. Aware, "A STATCOM- Control scheme for Grid connected Wind Energy System for Power Quality Improvement", in IEEE Systems Journal, Volume 4, no.3, September 2010.
- [8] K. S. Hook, Y. Liu, and S. Atcitty, "Mitigation of the wind generation integration related power quality issues by energy storage", Energy power quality journal. Volume XII, no. 2, September 2006.
- [9] S. W. Mohod and M. V. Aware, "Grid power quality with variable speed wind energy conversion", in IEEE International Conference Power Electronic Drives and Energy System (PEDES), Delhi, Dec. 2006.
- [10] Kulatunga N A, Navaratna S, Dole J, Liyanagendra C, Martin A T, "Hardware Development for Smart Meter Based Innovations", in Innovative Smart Grid Technologies in IEEE Conference, page 1 to [5] September 2012.
- [11] Jalilzadeh, Saeid; Kazemi, Ahad and Farhang, Peyman. "Analysis and Assessment of Power System Including Wind Farm by Using SVC and STATCOM", International Review of Electrical Engineering, 2012.
- [12] Saravana Murthy, P., P. Devaki, and J. Devishree. "A Static Compensation Method Based Scheme for Improvement of Power Quality in Wind Generation", 2011 International Conference on Process Automation Control and Computing, 2011.
- [13] Yuvaraj, V., S.N. Deepa, A.P. Roger Rozario, and Madhusudan Kumar. "Improving Grid Power Quality with FACTS Device on Integration of Wind Energy System", 2011 Fifth Asia Modelling Symposium, 2011.
- [14] Sharad W. Mohod. "Energy Storage to Stabilize the Weak Wind Generating Grid", 2008 Joint International Conference on Power System Technology and IEEE Power India Conference.