



Efficient Feature Extraction for Face Recognition with Combined Method of PCA and GMM

Savita Channagoudar*¹, Dr. Srikanta Murthy. K²

¹ Research Scholar, S. T. J. I. T, Ranabennur-581115, India

² Professor & Head, Dept of CS&E, NCET, Bengaluru.

*Corresponding author Email: savitha.Chemnegodar@gmail.com, shree194@gmail.com

Abstract

In the course of recent decades, various face recognition techniques have been proposed in PC vision, and the majority of them utilize all encompassing face pictures for individual ID. In some true situations particularly some unconstrained conditions, human appearances may be impeded by different articles, and it is hard to acquire completely all encompassing face pictures for acknowledgment. To address this, we propose another halfway face recognition way to deal with perceive people of enthusiasm from their fractional appearances. Given a couple of exhibition picture and test confront fix, we initially distinguish keypoints and separate their neighborhood textural highlights. At that point, we propose a powerful direct set coordinating technique toward discriminatively coordinate these two removed neighborhood highlight sets, where both the textural data and geometrical data of nearby highlights are unequivocally utilized for coordinating all the while. At last, the similitude of two appearances is changed over as the separation between these two adjusted capabilities. Trial comes about on four open face informational indexes demonstrate the adequacy of the proposed approach.

Keywords: GMM(Gaussian Mixture Model), PCA(principle component Analysis), LGPP(Local Gabor Phase Pattern), HGPP (Histogram of Gabor phase pattern), LBP(Local Binary Pattern).

1. Introduction

Face acknowledgment is the way toward distinguishing at least one individuals in pictures or recordings by breaking down and looking at designs (M. Du, 2014). Calculations for confront acknowledgment ordinarily separate facial highlights and contrast them with a database to locate the best match. Face acknowledgment is a critical piece of numerous biometric, security, and reconnaissance frameworks, and in addition picture and video ordering frameworks. Face acknowledgment use PC vision to separate discriminative data from facial pictures, and example acknowledgment or machine learning methods to show the presence of appearances and to group them (Bhatt, 2014). We can utilize PC vision methods to perform include extraction to encode the discriminative data required for confront acknowledgment as a minimal component vector utilizing strategies and calculations. Face identification is a fundamental device for confront acknowledgment framework. Face identification finds and fragments confront districts from jumbled pictures acquired from still pictures. It has various applications, for example, reconnaissance, security control frameworks, content based picture recovery, video conferencing, and shrewd human PC interfaces (Dalton, 2005). The greater part of the present face acknowledgment frameworks assume that countenances are promptly accessible for handling. Be that as it may, one can't get run of the mill pictures with just faces. The end product is that a framework that will section faces into jumbled pictures is required. With such a compact framework, one can approach the client to posture for the face ID errand. Notwithstanding making a more helpful target, one can likewise communicate with the

framework to enhance and screen confront identification (Gray, 2006). With a compact framework, identification appears to be less demanding.

2. Previous Work

In existing framework the framework utilized, numerous calculations and techniques to perceive the face. Baochang Zhang, et.al characterized a descriptor called Histogram of Gabor stage design (HGPP) for hearty face acknowledgment. This approach depends on the blend of the spatial histogram and the Gabor stage data encoding plan, the Gabor stage design (GPP). Not quite the same as the learning-based face acknowledgment strategies, in HGPP, highlights are straightforwardly removed without the preparation system. Two sorts of GPPs, GGPP and LGPP, are utilized to catch the stage varieties got from the introduction changing of Gabor wavelet and the connections among nearby neighbors. Both are separated into little non covering rectangular districts, from which the nearby histograms are extricated and linked into a solitary stretched out histogram highlight to catch the spatial data.

The strategy catches both stage and size data of Gabor change. Gabor wavelet is utilized as Gabor channel. An arrangement of separated pictures are acquired by convolving the given picture with Gabor channels. Every one of these pictures speaks to the picture data at a specific recurrence and introduction. From each sifted picture, Gabor highlights can be figured and used to recover pictures. Daugman's Method is utilized for stage quadrant demodulation coding of Gabor stage. The yield of Gabor Wavelets is demodulated and every pixel in the resultant picture is encoded to two bits. This strategy is basic to part the Gabor Wavelets

Pattern to Global Gabor Phase Pattern (GGPP) and Local Gabor Phase Pattern (LGPP).

GGPP conspire registers one twofold string for every pixel by linking the genuine and fanciful piece codes of various introductions. The neighborhood varieties for every pixel are encoded in Local Gabor Phase Pattern conspire. For every introduction and recurrence the genuine and nonexistent parts of Local Gabor Phase Pattern (LGPP) esteem is registered by utilizing neighborhood XOR design (LXP) administrator. LGGP really encodes the sign distinction of the focal pixel from its neighbors. Protest portrayal and highlight extraction are basic to question recognition. Uncommonly, objects are displayed by their spatial histograms over nearby fixes and class particular highlights are removed. Spatial histograms comprise of minor appropriations of a picture over nearby fixes and they can safeguard surface and shape data of a question at the same time.

Albeit worldwide appearance based highlights have been broadly utilized for confront portrayal, it is presently by and large concurred that neighborhood picture descriptors are more compelling for confront portrayal. Agent neighborhood highlights for confront acknowledgment incorporate Gabor wavelets, nearby paired examples (LBP), and scale invariant component change (SIFT). Contrasted with the worldwide appearance includes, the nearby highlights intrinsically have spatial area and introduction selectivity. These properties enable neighborhood highlight portrayals to be hearty against varieties to maturing, brightening, and articulation. As of late, numerous upgrades and variations of these strategies have been proposed to enhance the face acknowledgment execution.

Boosting is a general technique for enhancing the exactness of any given learning calculation. Boosting alludes to a general and provably successful technique for creating an exceptionally precise expectation govern by joining harsh and tolerably mistaken dependable guidelines. AdaBoost calculation has experienced exceptional hypothetical investigations and observational testing. The AdaBoost calculation, presented in 1995 by Freund and Schapire, tackled a significant number of the down to earth troubles of the prior boosting calculations.

High-dimensional facial highlights for the most part result in high acknowledgment execution. High-dimensional facial highlights can be removed utilizing both thick inspecting historic points and multi-scale strategies. High-dimensional facial highlights contain considerably more data than low-dimensional ones, which is essential for boosting acknowledgment execution, yet this advantage comes to the detriment of computational many-sided quality. Versatile binning is the least difficult calculation to diminish the component space set acquired from two GGP's. It is an endeavor to adaptively canister a solitary picture in light of the quantity of pixels in every area. The fundamental strategy is to receptacle pixels in two measurements by a factor of two, until the partial Poisson blunder of the tally in each canister turns out to be not exactly or equivalent to an edge esteem. At the point when the blunder is underneath this esteem, those pixels are not binned any further.

3. Proposed Methodology

In this paper multiple face feature extraction is done to avoid false detection. For input image preprocessing and noise removal is carried out. Face detection is done using viola jones algorithm. In this methods local features such as eyes, nose and mouth are first of all extracted and their locations and local statistics (geometric and/or appearance) are fed into a structural classifier. A big challenge for feature extraction methods is feature "restoration", this is when the system tries to retrieve features that are invisible due to large variations, e.g. head Pose when we are matching' a frontal image with a profile image. Further after that GMM and PCA algorithms are applied to extract the features. Features will be stored and class was assigned according the images. In the

testing case multi SVM classifier is used for recognition of face.

4. Module Description

4.1. Preprocessing

4.1.1. Image Resize:

In PC designs, image scaling is the way toward resizing an advanced picture. Scaling is a non-trifling procedure that includes an exchange off between effectiveness, smoothness and sharpness. With bitmap illustrations, as the extent of a picture is diminished or amplified, the pixels that shape the picture turn out to be progressively obvious, influencing the picture to seem "delicate" if pixels are found the middle value of, or spiked if not. With vector designs the exchange off might be in preparing power for re-rendering the picture, which might be observable as moderate re-rendering with still illustrations, or slower outline rate and edge skipping in PC activity..

4.1.2. Image Filtering:

The info skin pictures were pre-handling we are applying Gaussian separating to our information picture. Gaussian separating is regularly used to expel the clamor from the picture. Here we utilized wiener capacity to our information picture. Gaussian channel is windowed channel of straight class, by its inclination is weighted mean. Named after acclaimed researcher Carl Gauss since weights in the channel ascertained by Gaussian dissemination.

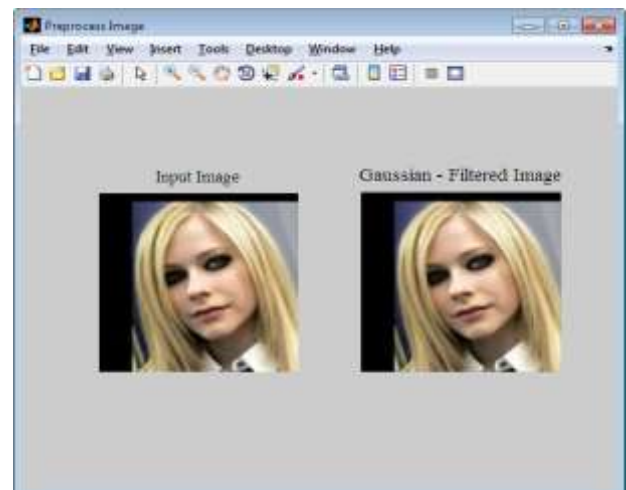


Fig. 1: Preprocessing

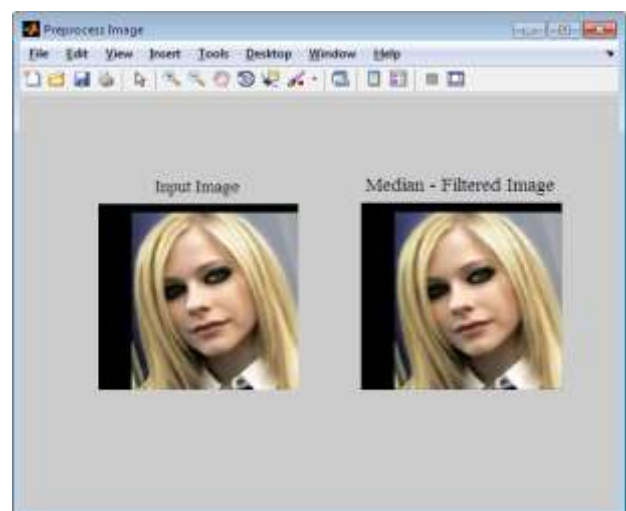


Fig. 2: Median Filtered Image

4.2 .Face Detection

Viola Jones: The course question identifier utilizes the Viola-Jones calculation to identify individuals' faces, noses, eyes, mouth, or abdominal area. You can likewise utilize the Training Image Labeler to prepare a custom classifier to use with this System protest. For points of interest on how the capacity functions, see Train a Cascade Object Detector. Characterize and set up your course question indicator utilizing the constructor.Call the progression technique with the information picture, the course protest identifier protest, finder, focuses PTS, and any discretionary properties. See the sentence structure beneath for utilizing the progression technique.

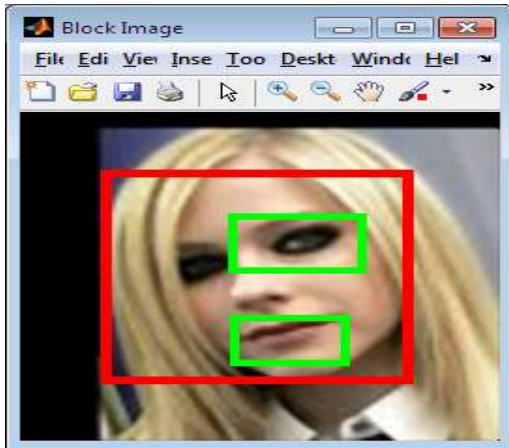


Fig. 3: Face Detected Image

4.3 .Feature Extraction

Different highlights are considered to enhance the precision fo the framework. In this paper PCA and GMM highlights are considered for usage.

Principal Component Analysis (PCA) is a measurable method that uses an orthogonal change to change over an arrangement of perceptions of potentially connected factors into an arrangement of estimations of directly uncorrelated factors called foremost segments.

Gaussian blend models are a probabilistic model for speaking to regularly circulated subpopulations inside a general populace. Blend models all in all don't require knowing which subpopulation an information point has a place with, enabling the model to take in the subpopulations consequently. Since subpopulation task isn't known, this constitutes a type of unsupervised learning. These ideas are then connected to Gaussian irregular factors and blend of-Gaussian arbitrary factors. Both scalar and vector-esteemed cases are talked about and the likelihood thickness capacities for these arbitrary factors are given with their parameters indicated.

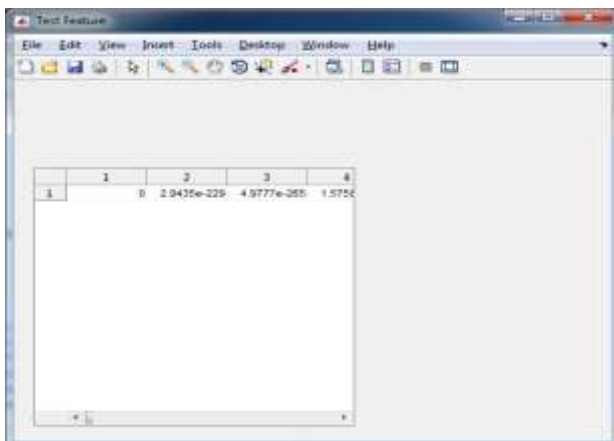


Fig. 4: Features

4.4. Matching Processing:

Support vector machines (SVMs, likewise bolster vector systems) are managed learning models with related learning calculations that investigate information utilized for characterization and relapse examination. Given an arrangement of preparing illustrations, each set apart as having a place with either of two classifications, a SVM preparing calculation manufactures a model that allocates new cases to one classification or the other, making it a non-probabilistic paired direct classifier (in spite of the fact that strategies, for example, Platt scaling exist to utilize SVM in a probabilistic characterization setting). A SVM demonstrate is a portrayal of the cases as focuses in space, mapped with the goal that the cases of the different classes are isolated by a reasonable hole that is as wide as could be allowed.



Fig. 5: Classification Result

4.5. Performance Analysis

The precision, affectability and specificity of the classifier is estimated. The exactness speaks to the proficiency of the procedure. The affectability indicates how the calculation gives rectify order. The specificity indicates how the calculation rejects the wrongly grouping outcomes. The execution of the procedure is estimated in light of the count of Accuracy, Area under bend of the procedure. Genuine positive = accurately recognized, False positive = erroneously distinguished, True negative = effectively dismissed, False negative = inaccurately dismissed.

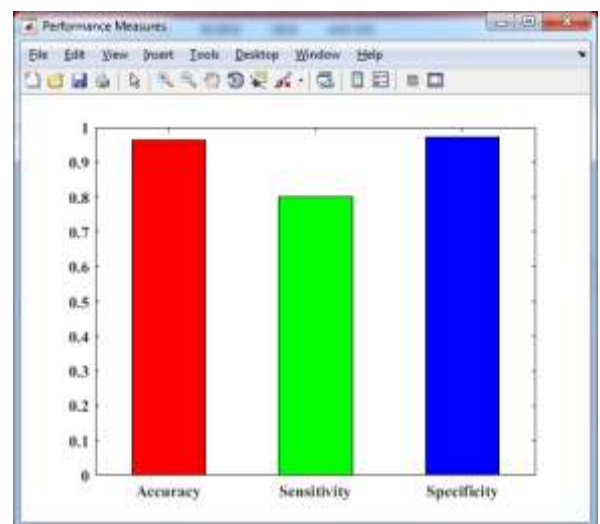


Fig. 6: Performance Analysis

5. Result Analysis

So far we have seen that research on face recognition has been primarily limited within the computer science community although statistical and probabilistic models are used widely in developing such identification tools. For instance, in this paper we have established the utility of the well-known statistical technique of mixture models (GMMs actually) and PCA in building efficient

face recognition techniques. The low misclassification error rates from our classifier show that it helps achieve this goal successfully. Our immediate future direction of work consists of assessing the performance of our GMM model on larger and more diverse databases with expression and pose variations.

6. Conclusion

In this paper face recognition based on multiple features recognition is implemented. Training database by combining multiple features decreases the false recognition rate. In this paper GMM and PCA features are combined. For classification SVM is used. System accuracy is more than 85% as per tested on celebrity and morph dataset.

References

- [1] M. Du, A. C. Sankaranarayanan, and R. Chellappa, "Robust face recognition from multi-view videos," *IEEE Trans. Image Process.*, vol. 23, no. 3, pp. 1105–1117, Mar. 2014.
- [2] H. S. Bhatt, R. Singh, M. Vatsa, and N. K. Ratha, "Improving crossresolution face matching using ensemble-based co-transfer learning," *IEEE Trans. Image Process.*, vol. 23, no. 12, pp. 5654–5669, Dec. 2014.
- [3] J. Dalton, I.-H. Kim, and B.-K. Lim, "RFID technologies in neonatal care," Intel Corp., LG CNS, ECO Inc., WonJu Christian Hospital, White Paper 257831, 2005.
- [4] J. E. Gray et al., "Patient misidentification in the neonatal intensive care unit: Quantification of risk," *Pediatrics*, vol. 117, no. 1, pp. 46–47, 2006.
- [5] Hospital Newborn Swap Outrages Parents. [Online]. Available: <http://abcnews.go.com/GMA/story?id=128144>, accessed Mar. 12, 2016.
- [6] A. W. Burgess, K. E. Carr, C. Nahirny, and J. B. Rabun, Jr., "Nonfamily infant abductions," *Amer. J. Nursing*, vol. 108, no. 9, pp.32–38, 2008.
- [7] National Center for Missing and Exploited Children. Infant Abductions. [Online]. Available: <http://www.missingkids.com/InfantAbduction>, accessed Mar. 12, 2016.
- [8] Parents Horrified After Hospital Mixup Allows Their Baby to be Breastfed by Stranger. [Online]. Available: http://www.huffingtonpost.com/2014/01/11/baby-breastfed-by-stranger_n_4578108.html?ir=India, accessed Mar. 12, 2016.
- [9] Switched at Birth, Then Meeting Aged 12. [Online]. Available: <http://www.bbc.com/news/magazine-15432846>, accessed Apr. 15, 2015.
- [10] Babies Switched at Birth. [Online]. Available: http://en.wikipedia.org/wiki/Babies_switched_at_birth, accessed Mar. 12, 2016.
- [11] Newborn's Death: Parents Accuse Hospital of Changing Their Child With Somebody Else's. [Online]. Available: <http://indianexpress.com/article/cities/chandigarh/newborns-death-parents-accuse-hospitalof-changing-their-s-child-with-somebody-elses>, accessed Mar. 12, 2016.
- [12] Family Alleges Swapping of Newborn at Nursing Home. [Online]. Available: <http://timesofindia.indiatimes.com/city/chandigarh/Familyalleges-swapping-of-newborn-at-nursing-home/articleshow/23756717.cms>, accessed Mar. 12, 2016.
- [13] Get Newborn Clicked With Family to Avoid Swapping Controversies: NCSC Member. [Online]. Available: <http://www.tribuneindia.com/news/haryana/community/get-newborn-clickedwithfamily-to-avoid-swapping-controversies-ncsc-member/131875.html>, accessed Mar. 12, 2016
- [14] Couple Allege Newborn Swap. [Online]. Available: http://www.telegraphindia.com/1151212/jsp/northeast/story_58007.jsp#.VnZk0GSGSko, accessed Mar. 12, 2016.
- [15] A. K. Jain, K. Cao, and S. S. Arora, "Recognizing infants and toddlers using fingerprints: Increasing the vaccination coverage," in *Proc. Int. Joint Conf. Biometrics*, 2014, pp. 1–8.
- [16] K. S. Shepard, T. Erickson, and H. Fromm, "Limitations of foot printing as a means of infant identification," *Pediatrics*, vol. 37, no. 1, pp. 107–108, 1966.
- [17] N. T. R. Pelá, M. V. Mamede, and M. S. G. Tavares, "Análise crítica de impressões plantares de recém-nascidos," *Revista Brasileira Enfermagem*, vol. 29, pp. 100–105, Dec. 1976.
- [18] D. Weingaertner, O. R. P. Bellon, L. Silva, and M. N. L. Cat, "Newborn's biometric identification: Can it be done?" in *Proc. Int. Joint Conf. Comput. Vis., Imag. Comput. Graph. Theory Appl.*, 2008, pp. 200–205.
- [19] R. P. Lemes, O. R. P. Bellon, L. Silva, and A. K. Jain, "Biometric recognition of newborns: Identification using palmprints," in *Proc. Int. Joint Conf. Biometrics*, 2011, pp. 1–6.
- [20] C. Fields, C. F. Hugh, C. P. Warren, and M. Zimmeroff, "The ear of the newborn as an identification constant," *J. Obstetrics Gynecol.*, vol. 16, no. 1, pp. 98–102, 1960.