

Extraction of melanoma 3d features from tensor representation

Sushmita N S^{1*}, Gururaj Murtugudde², T Y Satheesha³

¹ Dept. of ISE, NCET Bengaluru, India

² Dept. of ISE, SVCE Bengaluru, India

³ Dept. of ECE, NCET Bengaluru, India

*Corresponding author E-mail: sushsushmita@gmail.com

Abstract

Melanoma is one of the unsafe growth to be dealt with too to recognize in introductory stage. Here we take the skin sore by ROI and after that we take out highlights of it then it should be sectioned whether the specific picture is malignant or not. In the event that it is destructive at that point group the extricated includes and examine about kind of stages. This paper presents a non-obtrusive electronic dermoscopy framework that considers the evaluated profundity of skin sores for determination. For test assessments, the PH2 and ATLAS dermoscopy datasets is considered. A novel 3D remaking calculation from 2D dermoscopic pictures is proposed. Here we remove the 3D highlights from tensor portrayal. The discovery of 3D picture shape and RGB are to be done. In this paper, we have proposed this work for 3D profundity parameter, which will improve the grouping rate.

Keywords: Preprocessing; Segmentation; Feature Extraction; Melanoma.

1. Introduction

The number of melanoma dye due to continuous improvement of the results of a number of diseases. This disease is the main cause is due to ultraviolet light exposure. This is a change in color of the skin resulting in skin pigmentation. It can occur in any part of the body. This is a melanoma has spread it deep inside the skin layer needs to be discovered and cured before. This can be treated with chemotherapy. It is common, but when appropriate treatment is not very dangerous.

Melanoma is usually based on the ABCD rule, (asymmetry, irregular border, color changes, and prison), 7-point checklist of diagnosis [1] and texture. In this paper, we took a skin image for our segment. A portion of the segment are then extracted from the various features, and finally, we go for the divided. We classified [2] includes RGB images for the individual pixel data 3d Register. Here, a higher rate of discrimination is part of the feature extraction depth parameter is proposed.

The remaining paper is presented below. Section II and Section III, we carried out the background of work related to the proposed system. DISCUSSION specifies. Section IV is about the test results. Reported Finally, part V Conclusion home.

2. Background

ABCD features for melanoma skin cancer [3] Total Dermatoscopic Value (TDV) is used to calculate.

Asymmetry features of the lesions consist of information asymmetry and long index. Border irregular feature lesions Compact index, fractal dimension from the edge of the sudden transition coloring consist of information. Color homogeneous feature of homogeneous lesions with color photometry of the relationship between geometry and consist of information. The diameter of the cells from the lesions. In this research, the effect on melanoma,

disease, doubt and benign skin lesions [4]. The paper "Use of Texture and color features for Dermoscopy for melanoma detection systems [5] the author of" In the first two isolated lesions of the skin and the second one to decide about the objectives of the two is to determine the color and texture. Presentation features.

The only drawback of the document classification accuracy rate, we can increase the rate of discrimination as a result of the depth of the feature as they entered our proposed system less.

3. Proposed system

Part of the skin lesions detection and feature extraction of important aim of our paper. This involves the following

a) Preprocessing:

The preprocessing stage in the first example, as shown in Figure 1 (a) of red, green and blue color components are converted into the image by adding gray. The gray image as shown in Figure 1 (b) by a Gaussian filter needs to be filtered. The image shown in Figure 1 (c) with the aid of 0s and 1s of the binary image needs to be converted by the Gaussian filter is filtered.



Fig. 1: (A): Grey Scale Image.

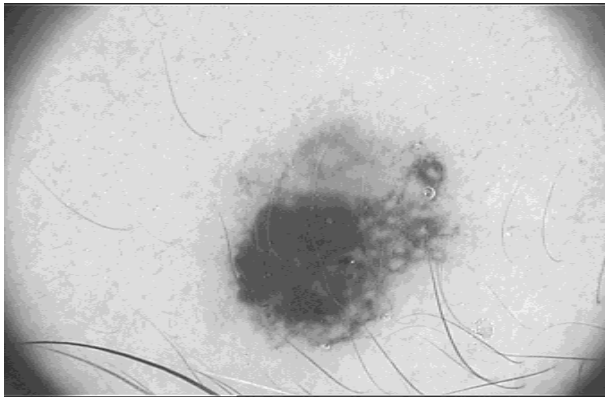


Fig. 1: (B) Gaussian Filtered Image.

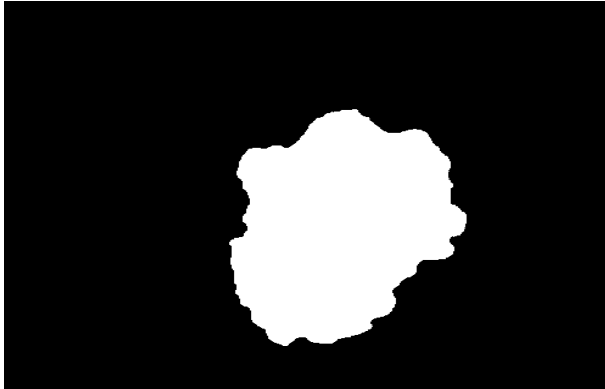


Fig. 1: (C) ROI Image.

Here, the threshold value for those with more color pixels are replaced with the binary 0 and less and the value of those with a brightness equivalent to the threshold holding 0 black color with black and white pixels are replaced by the value of an image resulting 1. white and holding a value of 1. Next, we will correct imag Acquiring e black color pixels are replaced by white pixels. The lesions using a circular pattern of periodic lines. Held by the collapse of the radial approach. In addition, in the black and white images are recycled in construction. For the next step is to engage in a gray scale image of the ascension for the segment based on that final mix named as the algorithm using an algorithm. [6] proposed a protected hash message verification code. A safe hash message confirmation code to stay away from authentication denial list checking is proposed for vehicular impromptu systems (VANETs). The gathering mark conspire is generally utilized as a part of VANETs for secure correspondence, the current frameworks in view of gathering mark plot gives confirmation delay in authentication repudiation list checking. With a specific end goal to conquer this postpone this paper utilizes a Hash message verification code (HMAC). It is utilized to stay away from tedious CRL checking and it likewise guarantees the honesty of messages. The Hash message verification code and computerized signature calculation are utilized to make it more secure [10]. In this plan the gathering private keys are appropriated by the roadside units (RSUs) and it additionally deals with the vehicles in a restricted way. At last, agreeable message validation is utilized among substances, in which every vehicle just needs to check few messages, therefore significantly easing the verification load.

b) Contour Algorithm for segmentation:

Most of the far edge of the artificial skin lesions from the boundary trace actively applied. Active is displayed under the image of a noisy image. These interfere with the texture of the skin, hair or changes. So the explosive effects, in order to remove the disruption, we named as the algorithm using a very powerful algorithm. They are the first to discover the skin in order to remove the stroke. These lesions are connected together around the edges of corners to make an average of at least getting out of them using the technique.

At the beginning of the associated color space using versions to match the strength of the stroke is found to have done. Then the corners are simple to connect using a standard technique called. Patterns and colors are selected. Therefore, from a part of the stroke, a confidence degree, consider using the EM method. Add roughly in order to be able to access the information contained in the model, let us consider. 1st stroke feature to extract a lot of features in the image, where the vault. Let the black and white binary labels of the strokes be b.

$$c = \text{argmax}_{\log(a, b, c)}$$

To find the value of b, we replace the value $\log(a, b, c)$ by its expected value for b with Λ is the value estimated C from c

$$P(c; \Lambda) = \text{esti}$$

$$\{ \log(abc) | a, \Lambda \}$$

$$c = \int c \quad b \quad c$$

$$P(c; \Lambda) = D + \sum PFe(cj, a) + IE(c)$$

With is a constant, is internal energy $PFe(cj, a)$ is a potential function.

$$PFe(cj, a) = -\sum v^l PFl^l(c)$$

With

$PFl^l(cj)$ is the PF (potential function) associated with l th stroke and

v^l is the probability of the

validity of the l th stroke

$$v^l = \text{pro}(b^l = 1 | a^l, \Lambda)$$

The PF is so neat, he called the potential function Since keep on changing. There are two ways to estimate these steps. The possibility of the validity of the first stroke is updated. Then secondly maximum value [7]. Thus the extra disturbances are removed from the outlier strokes.

$P(c; c^\Lambda)$ is increased to its

As a result, the output in Figure 2. 30 segment next process those features ABCD criteria are extracted in order to fulfill the feature extraction .A total. As a result, the output shown in Figure 2.

(A) Input Image.



(B) Contour Output



Fig. 2: Contour EM Algorithm Image for Segmentation.

Feature extraction:

Feature extraction based on texture:

Contrast: The features extracted based on contrast are:

$$\text{Contrast} = \sum_{x,y} (x - y)^2 \text{pd}(x, y)$$

Correlation:

The features extracted based on correlation is done using the formula:

$$\text{correlatoion} = \frac{\sum_{x,y} (x - mx)(y - my) \text{pd}(x, y)}{dxdy}$$

Energy:

Features extracted based on energy is done by the formulae:

$$\text{Energy} = \sum_{x,y} \text{pd}^2(x, y)$$

Homogeneity:

The features extracted based on homogeneity is given by

$$\text{homogeneity} = \sum_{x,y} \frac{\text{pd}(x,y)}{1+|x-y|}$$

$$\text{area} = \sum \sum (pxy m)$$

Features extracted based on colors:

- 2

$$\left| \begin{matrix} 1 & 1 \\ 1 & 1 \end{matrix} \right|$$

m x L m y N

Where m is the mean of the channels of colors red, green, blue L Is the lesion and N is the normal skin patch. These color features thus satisfy the colour aspects of the ABCD rule. The features of the color channels are: 2:Red, 3:RedGreen, 4:RedBlue, 5:GreenRed, 6:GreenGreen, 7:GreenBlue, 8:BlueRed, 9:BlueGreen, 10:BlueBlue.

Features extracted based on variability:

These are features extracted based on color and shape variability. The formulae used for it is given by:

$$dc L d c N$$

Where d c

Is the standard deviation of the channel C, L is the lesion and N is the normal skin patch. These features are serialized as follows: 11: Red, 12: Green, 13: Blue, 14: Zero.

Features based on peak and pit densities :

We take 8 to 9 nearest pixel values and the largest among them is considered as the peak density. The features based on the peak pixel are obtained using the following formulae:

$$nc, d=$$

No of peak in channel c+no of pits in the channel c area of the lesion

Where c is the channel belonging to {r, g, b, z} and d is the standard deviation of the Gaussian filter given by 0.5, 1, 1.5. Here also the features attained can be numbered as : 15:Red, 0.5, 16:Green, 0.5, 17:Blue, 0.5, 18:Z, 0.5, 19:Red, 1.0, 20:Green, 1.0, 21:Blue, 1.0, 22:Z, 1.0, 23:Red, 2.0, 24:Green, 2.0, 25:Blue, 2.0, 26:Z, 2.0.

Out of a total of 30 features each one of them after selecting them sequentially selected, and then sorted. As a result, segment and feature extraction of Classified training [7] are trained by then. Color distribution can be determined by their moments. The first time each color channel can be used in the middle of the second and third. The first image of the average color. In the center of the second image of the image that he is now the variance of the third central moment in each color channel asymmetry. A color space [8] the color of the characteristics to extract choice. We have an image with a pixel and prison AXB Let's consider adding the function.

Then the color moments is given by:

$$\text{Moment } 5 = (\text{eff } 30 - 3\text{eff } 12)$$

$$\text{Moments} = \sum \sum^f (i, j) i^x j^y$$

$$30 \quad 12 \quad 30 \quad 12$$

$$(\text{eff} - \text{eff})[(\text{eff} + \text{eff})^2 + (\text{eff} - \text{eff})^2] x, y \quad 1 \quad j$$

$$m_{x,y} = \sum \sum^f (i,j) (i-ib)^x (j-jb)^y$$

The first and the second moment is mainly concentrated for 3D objects.

moment invariants

For an image function the 2D moments (x + y) are given as

$$\text{Moments } x, y = \sum \sum^f (i, j) i^x j^y$$

Where x, y is 0, 1, 2...

If the image is a piecewise function then it will be bounded and has real values and thus all moments exist. in order and the image function uniquely determines the sequential moment

The geometry and central moments are given by :

$$\text{Moment } 5 = (\text{eff } 30 - 3\text{eff } 12)$$

$$\text{Moments} = \sum \sum^f (i,j) i^x j^y$$

$$(\text{eff} - \text{eff})[(\text{eff} + \text{eff})^2 + (\text{eff} - \text{eff})^2]$$

$$m_{x,y} = \sum \sum^f (i,j) (i-ib)^x (j-jb)^y$$

$$x, y \quad i \quad j$$

$$i \quad j$$

Where ib and jb are the centre of gravities of the image.

The normalization of the moments is given by

$$m_{x,y}$$

Normalization $xy = \frac{m_{20}}{m_{00}^2}$

Where

$$g = \frac{(x^2 + y^2)}{2}$$

Thus these moments' invariants are used for discriminating the shape of the objects.

$$\text{moment} = \frac{m_{20} + m_{02}}{2}$$

$$\text{moment} = \frac{(m_{20} - m_{02})^2 + 4m_{11}^2}{2}$$

$$\text{moment} = \frac{(m_{30} - 3m_{12})^2 + (3m_{21} - m_{03})^2}{3}$$

$$\text{moment} = \frac{m_{30}^2 + m_{12}^2 + m_{21}^2 + m_{03}^2}{4}$$

$$(\text{eff} - \text{eff})^2 + (\text{eff} - \text{eff})^2$$

$$\text{moment5} = \text{eff}_{30} + 3\text{eff}_{12} + \text{eff}_{30} + \text{eff}_{12}$$

$$(\text{eff} + \text{eff})^2 + (\text{eff} - \text{eff})^2$$

$$\text{moment} = \frac{m_{30}^2 + m_{12}^2 + m_{21}^2 + m_{03}^2}{4}$$

$$\text{moment} = \frac{(m_{20} + m_{02})^2 + (m_{30} - 3m_{12})^2 + (3m_{21} - m_{03})^2}{6}$$

$$+4m_{11}^2 + (m_{20} - m_{02})(m_{30} + m_{03})$$

$$+4m_{11}^2 + (m_{20} - m_{02})(m_{30} + m_{03})$$

The above invariants cannot separate the 3D features perfectly. Suppose to overcome this another 3D moment invariants can be used these moment invariants for the first 3 orders are:

$$\text{mom} = \frac{(m_{20} - m_{02})^2 + 4m_{11}^2}{2}$$

$$\text{mom} = \frac{(m_{30} - 3m_{12})^2 + (3m_{21} - m_{03})^2}{3}$$

$$+4m_{11}^2 + (m_{20} - m_{02})(m_{30} + m_{03})$$

$$\text{mom} = \frac{(m_{20} + m_{02})^2 + (m_{30} - 3m_{12})^2 + (3m_{21} - m_{03})^2}{6}$$

$$\text{mom} = \frac{(m_{20} - m_{02})^2 + 4m_{11}^2}{2}$$

$$\text{mom} = \frac{(m_{30} - 3m_{12})^2 + (3m_{21} - m_{03})^2}{3}$$

$$+4m_{11}^2 + (m_{20} - m_{02})(m_{30} + m_{03})$$

$$\text{mom} = \frac{(m_{20} + m_{02})^2 + (m_{30} - 3m_{12})^2 + (3m_{21} - m_{03})^2}{6}$$

4. Experimental result

If we want to represent the complex object we have to choose bag of feature (BoF) method. It is a collection of non-global model, e.g., lesion part of the image. In this method primarily, a set of keypoints, i.e., $P_{img} \in R^2$, is defined in the image. In the case of lesion images, the essence are point of a regular Network of size $k \times k$ defined in the image domain. Secondly, each essence is defined by a detail vector $x \in R^n$, which shows local clue carry in the image patch of size $K \times K$ centered at the i th essence. The content of the lesion part is equal to the content of the network to ditch super-imposed. Found in the area outside of the PSL (Pigment skin lesions), more than 50% are forsaken. Each sample lesions in other words, our individual lesions found in the sample using the Histogram to set the global classification system so the right color features. As a result, the red, green and blue separately added features are shown in (3 - 6).

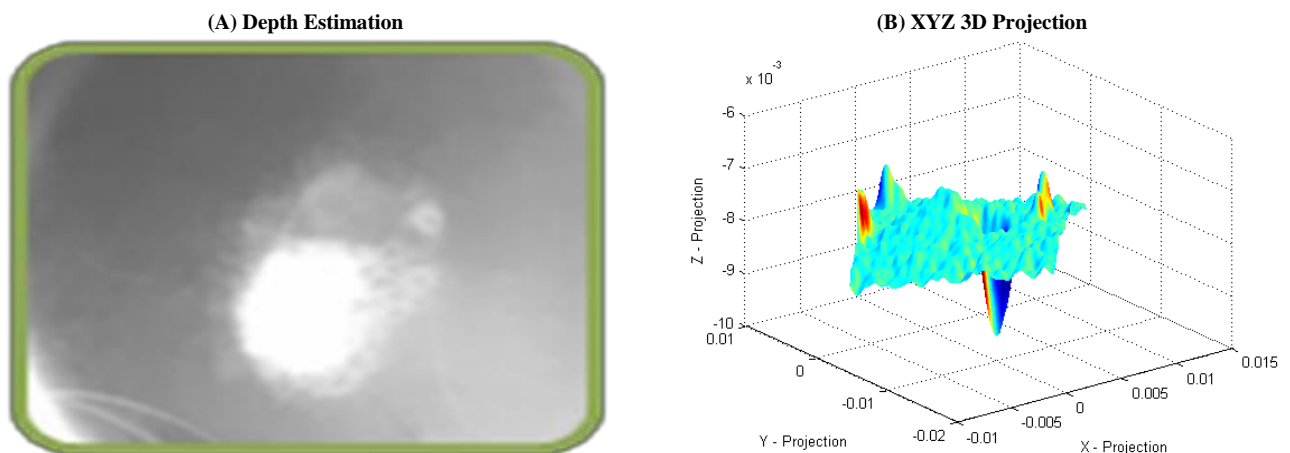


Fig. 3: (A): Depth Estimation. (B): Xyz 3d Projection.

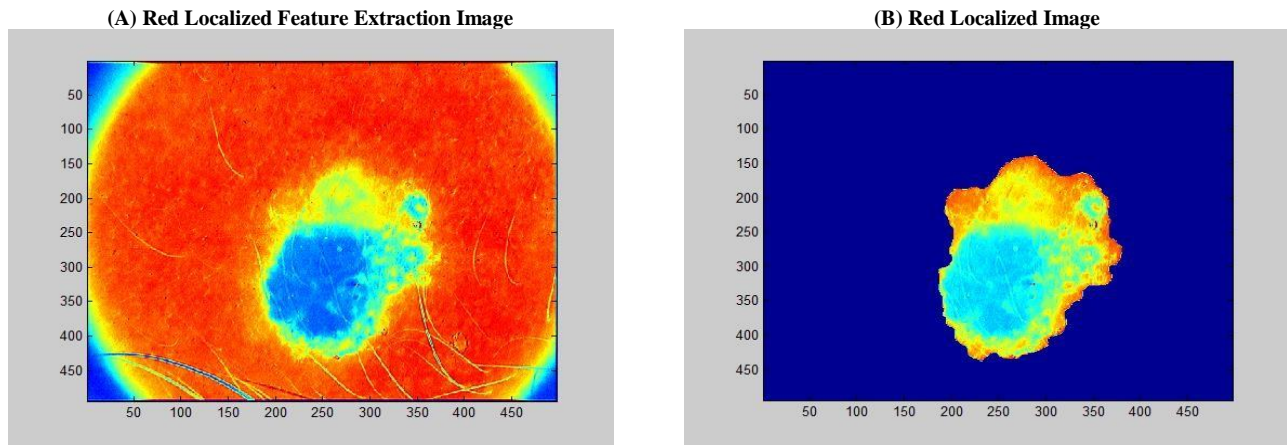


Fig. 4: (A): Red Localized Feature Extraction Image. (B): Red Localized Image

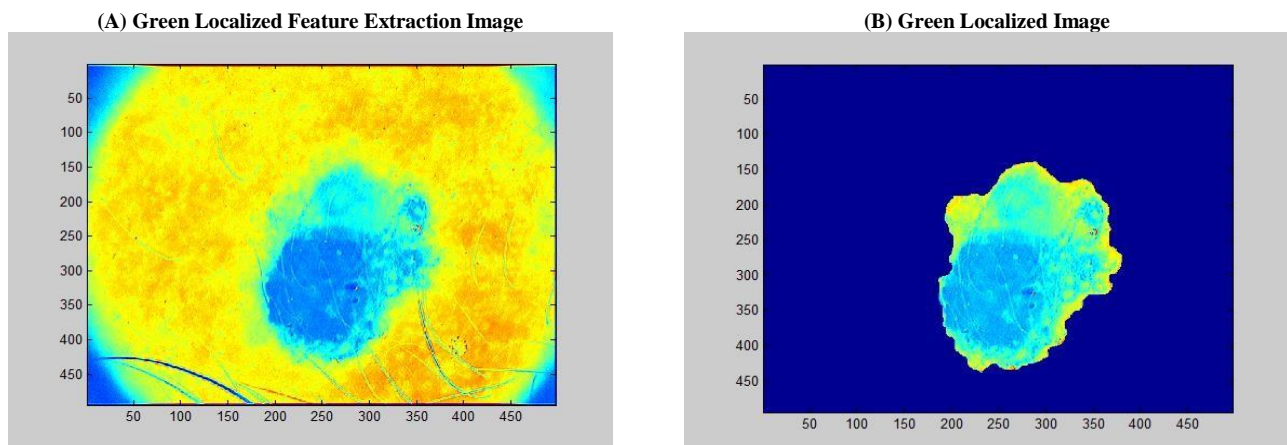


Fig. 5: (A): Green Localized Feature Extraction Image. (B): Green Localized Image

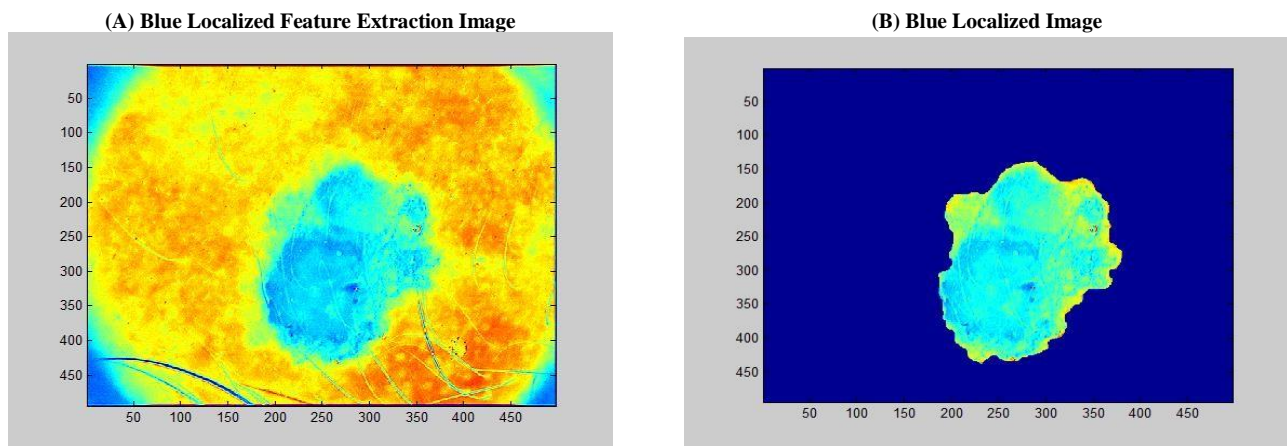


Fig. 6: (A): Blue Localized Feature Extraction Image. (B): Blue Localized Image.

5. Conclusion

A novel computer dermoscopy system proposed in this paper. melanoma skin lesions, highlighting the importance of the deep. To extract the depth of a novel 3D reconstruction algorithm is proposed. segment neat mix of success by using the algorithm. Therefore, the depth of features in addition allowed to increase rates in separate declaration. Since many features of melanoma can be used for practical assistance to accelerate melanoma are also used for detecting. Here for larger features are considered for melanoma detection. Figure 7(a-c) shows the 3D feature from Red, Green and Blue localized channels. Therefore, the rate of accuracy and discrimination both in a better performance.

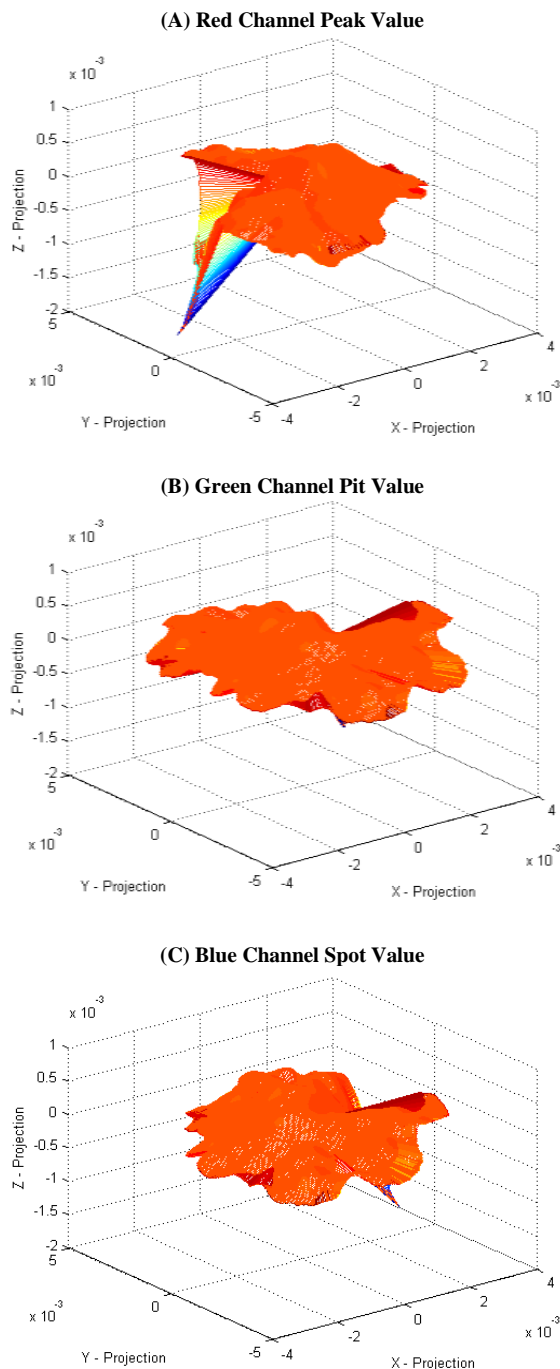


Fig. 7: (A): Red Channel Peak Value. (B): Green Channel Pit Value. (C): Blue Channel Spot Value.

References

- [1] G. Betta, G. Di Leo, G. Fabbrocini, A. Paolillo, M. Scalvenzi, "Automated Application of the "7-point checklist" Diagnosis Method for Skin Lesions: Estimation of Chromatic and Shape Parameters" IMTC 2005 – Instrumentation and Measurement Technology Conference Ottawa, Canada, 17-19 May 2005.
- [2] Brian D'Alessandro, Atam P. Dhawan, "3D Volume reconstruction of Skin Lesions for Melanin and Blood Volume Estimation and Lesion Severity Analysis" 2011 IEEE.
- [3] K. Madhankumar, P. Kumar, "Characterization of Skin Lesions" Proceedings of the International Conference on Pattern Recognition, Informatics and Medical Engineering, March 21-23, 2012. <https://doi.org/10.1109/ICPRIME.2012.6208362>.
- [4] Madhankumar, K., and P. Kumar. "Characterization of skin lesions", International Conference on Pattern Recognition Informatics and Medical Engineering (PRIME-2012), 2012. <https://doi.org/10.1109/ICPRIME.2012.6208362>.
- [5] Scott E. Umbaugh, Randy H. Moss William V. Stoecker, Gregory A. Hance, "Automatic Color Segmentation Algorithms With Ap-

plication to Skin Tumor feature Identification" IEEE Engineering In Medicine And Biology, 1993.

- [6] Christo Ananth, M.Danya Priyadarshini, "A Secure Hash Message Authentication Code to avoid Certificate Revocation list Checking in Vehicular Adhoc networks", International Journal of Applied Engineering Research (IJAER), Volume 10, Special Issue 2, 2015,(1250-1254).
- [7] Ruela, Margarida, Catarina Barata, Jorge S. Marques, and Jorge Rozeira. "A system for the detection of melanomas in dermoscopy images using shape and symmetry features", Computer Methods in Biomechanics and Biomedical Engineering Imaging & Visualization, 2015.
- [8] Sheng Xu. "3D object recognition using multiple features and neural network", 2008 IEEE Conference on Cybernetics and Intelligent Systems, 09/2008. <https://doi.org/10.1109/ICCIS.2008.4670860>.
- [9] K.Sathesh Kumar, K.Shankar, M. Ilayaraja and M. Rajesh, "Sensitive Data Security In Cloud Computing Aid Of Different Encryption Techniques, Journal of Advanced Research in Dynamical and Control Systems, vol.18, no.23, 2017.